



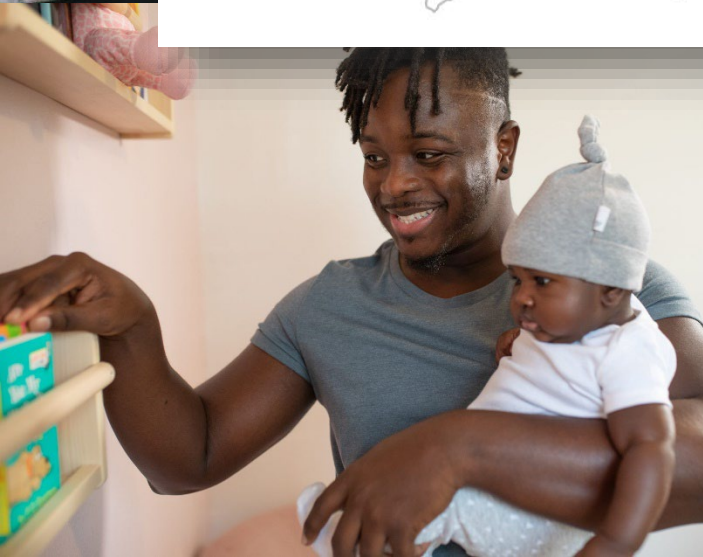
# Health Statistics on the Web

Network  
of the  
National  
Library of  
Medicine

February  
15,  
2024



**NNLM** Network of the National Library of Medicine

The central graphic features a stylized map of the United States, including Alaska and Hawaii, composed of a network of grey lines connecting various nodes. The acronym "NNLM" is prominently displayed in large, bold, blue letters across the center of the map. To the right of the map, the text "Network of the National Library of Medicine" is written in a smaller, blue, sans-serif font.



## National Institutes of Health

Nation's leading research agency



NIH



NLM



NNLM



ROC

## National Library of Medicine

World's largest biomedical library

## Network of the National Library of Medicine

Outreach program of the NLM

## Regions, Offices, and Centers

- 7 regional medical libraries
- 3 national offices
- 4 national centers



# Objectives

## Recognize

- Recognize the differences between data, data sets, and statistics.

## Understand

- Understand a four-step process used to locate relevant health statistics for a particular circumstance or issue.

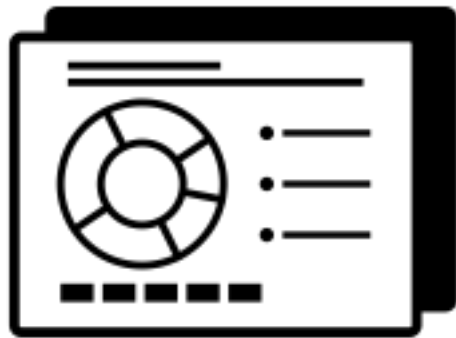
## Identify

- Identify online resources that provide health statistics at the national, state, and local level.



# Class Materials

PowerPoint slides



Online table



Guided handout





# Agenda



Statistics overview



Steps to finding health statistics



Live demonstration of key resources



Wrap up





# Data vs. Statistics

## Data

- Raw numbers
- Counts of individual events or services
- Collected at local, state, national, etc. levels

## Data set

- Major unit of data storage and retrieval
- Data collected & organized according to criteria
- May or may not represent entire population

## Statistics

- Data analyzed and summarized
- Most data on websites are compiled statistics
- Presented as percentage, graph, table, map, etc.



# Key Features of Health Statistics

- A numerical summary of data computed on samples
- Characterize the health of a population and the influences that affect health
- Parameters are values that describes a characteristic of a population
- Often collected and analyzed over a specific period
- Collected to meet needs of the collector





# Uses of Health Statistics



Provide information about the health of a population and what influences it



Monitor health status and risk factors



Guide research, policy, and program development



Evaluate research, policy and program effectiveness



# Steps to Finding Health Statistics

1. Formulate the question
2. Choose the best resource
3. Evaluate the results
4. Repeat as necessary





# Class Exercise Part I:

**What question or topic will you search today?**

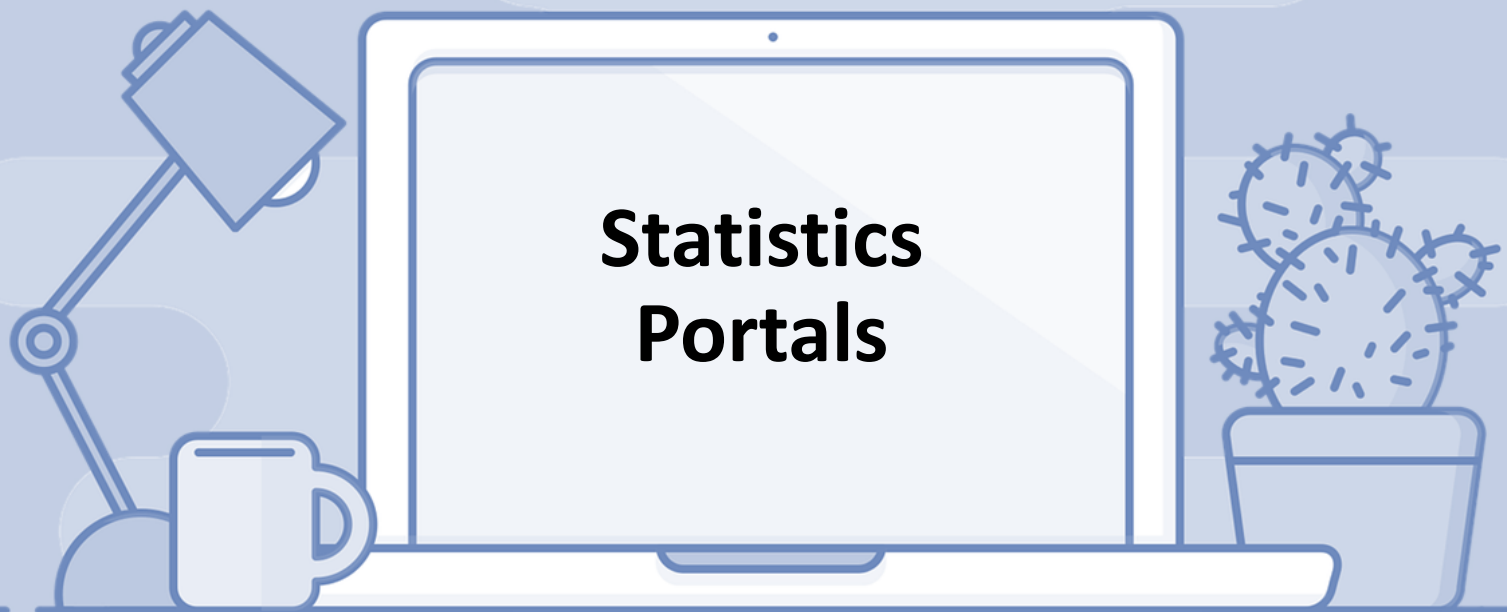
Take two minutes to formulate a question for a health statistic you are interested in finding today. You may want to include age, range, geography, and/or time frame in your question.

## Example questions:

- What percentage of adults aged 21 and over reported having coronary heart disease in Kentucky in 2019?
- How has the rural-urban distribution of the geriatric patient population in the United States changed over the last decade?



# Statistics Portals





# National Center for Health Statistics (NCHS)

- Principal health statistics agency for the U.S.
- Part of Centers for Disease Control & Prevention (CDC) since 1987
- Compiles statistics from numerous data sources
- Provides information to guide decisions on policies, the health care system, and health disparities
- Adheres to quality guidelines to maximize the integrity of the information provided to the public



# MedlinePlus

- National Library of Medicine's consumer health portal
- Information on diseases and conditions, wellness issues, drugs and supplements, and medical tests
- Sourced from over 500 vetted organizations
- Health Topic pages can be used to quickly access statistics on a particular topic



# Questions?









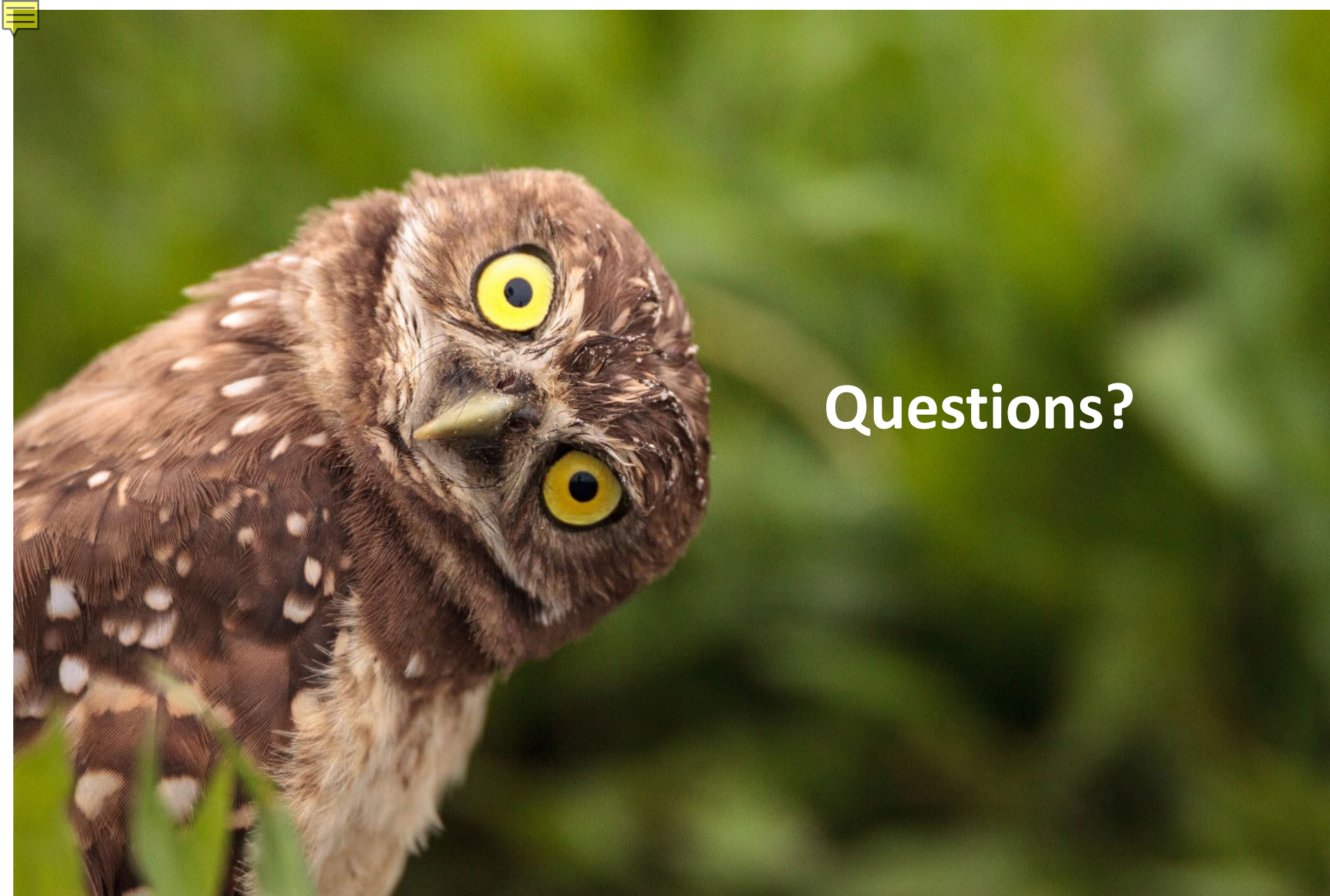
# Behavioral Risk Factor Surveillance System (BRFSS)

- Sponsored by the CDC and other federal agencies
- World's largest continuously conducted health survey
  - Health risk behaviors
  - Chronic conditions
  - Use of preventive services
- Collects self-reported data from all 50 states, Washington D.C., and U.S. territories



# State Health Facts

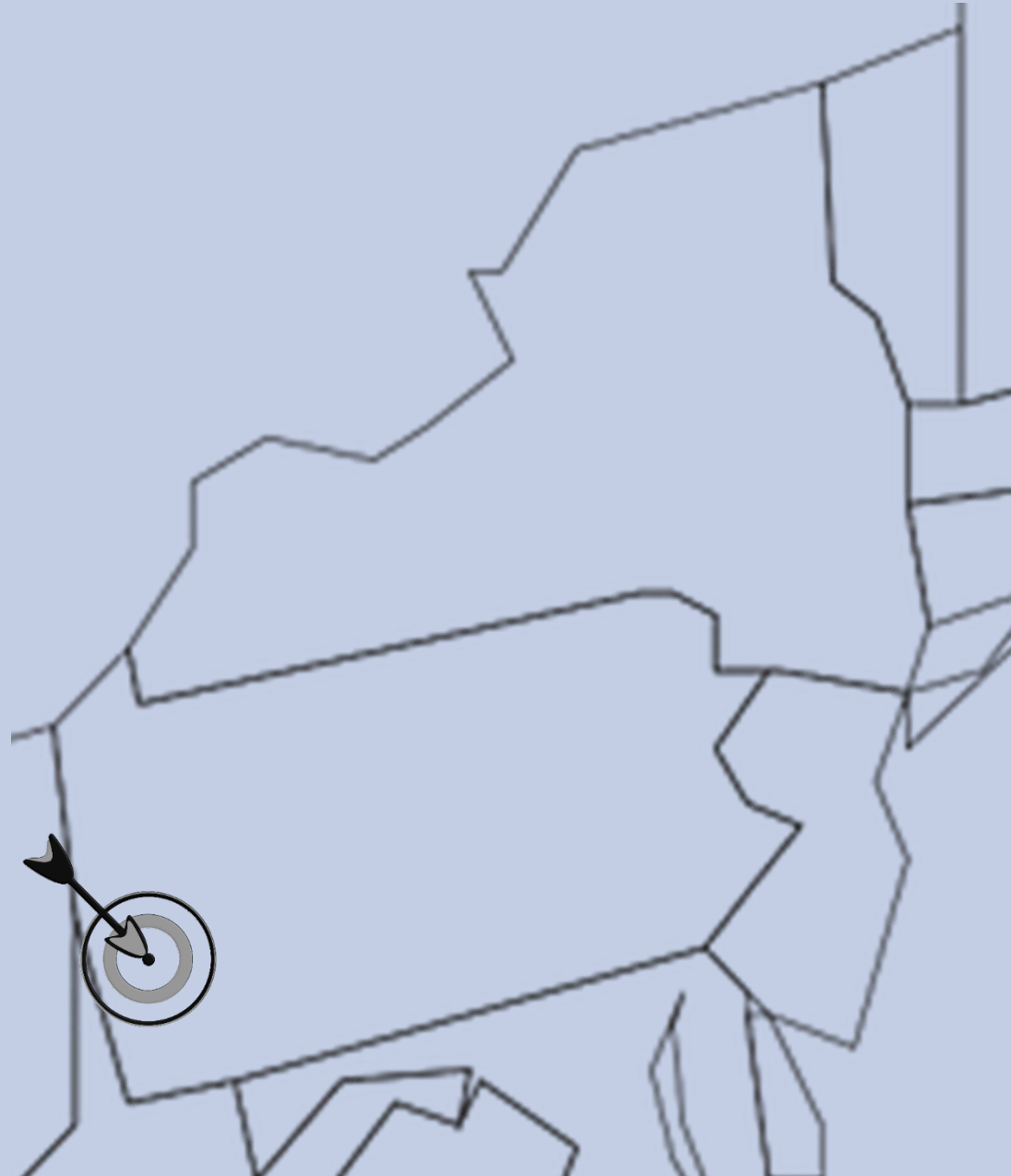
- Produced by the Kaiser Family Foundation
- Provides data at the national and state level
- Over 800 health indicators including:
  - Demographics and economy
  - Women's health
  - Minority health
  - Health insurance



Questions?



# Local Statistics





# U.S. Census Bureau

- Federal government's largest statistical agency
- Provides facts and figures about America's people, places, and economy
- Levels include state, county, city, town, zip code, census tract, congressional district, tribal areas
- Other surveys available include:
  - American Community Survey
  - Current Population Survey
  - Survey of Income and Program Participation





# County Health Rankings & Roadmaps

- Collaboration between Robert Wood Johnson Foundation and University of Wisconsin Population Health Institute
- Ranks counties on key health factors and health outcomes
- Statistics at the county level on factors such as:
  - Quality of life
  - Health behavior
  - Social and economic factors
  - Physical environment





# City Health Dashboard

- Created by the Department of Population Health and the School of Public Service at NYU in partnership with the National Resource Network
- Over 40 measures of health for over 900 U.S. cities
- Data at the city, zip code, and census tract levels
- Measures align with County Health Rankings & Roadmaps



# Rural Health Information Hub (RHlhub)

- Funded by the Federal Office of Rural Health Policy
- National clearinghouse on rural health issues
- Statistics for metro and non-metro counties on:

Demographics

Health disparities

Social determinants

Access to services



# National Neighborhood Data Archive



- [Cognability](#) – how your neighborhood supports cognitive health through places to be physically active, socially engaged, and keep your mind active
- [NaNDA Data Repository](#) – open data for research questions that address “place”
  - Social Determinants of Health
  - Crime rates
  - Police districts
  - Polluting sites
  - Public transit



# Questions?





# Class Exercise Part II

Take five minutes and use the question you formulated in Part 1 to explore steps 2 through 4 of the 4-step process for locating health statistics.

Perform a search for your question and take some notes on what you find.

**Step 2. Choose the best resource**

**Step 3. Evaluate what you've found**

**Step 4. Repeat as needed**



# Final Questions and Evaluation

**Christine Nieman Hislop**, MSLIS | Data Education Librarian  
NNLM Region 1 | [cnieman@hshsl.umaryland.edu](mailto:cnieman@hshsl.umaryland.edu)

**Katie Pierce Farrier**, MIS | Data Science Strategist |  
NNLM Region 3 | [katie.pierce-farrier@unthsc.edu](mailto:katie.pierce-farrier@unthsc.edu)

More trainings available at [NNLM.gov/training](https://nnlm.gov/training)

*Funded by the National Library of Medicine.  
NLM and NNLM are service marks of the US Department of Health and  
Human Services. Updated February 2024.*