

Census of Governments



Michael Reich
ADC, Public Sector
Economy Wide Statistics Division
U.S. Census Bureau

The U.S. Census Bureau

- The federal government's largest statistical agency – part of the U.S. Department of Commerce
- Conducts more than 130 surveys and programs each year and 3 censuses, including:
 - **The Decennial Census** – the once-a-decade population and housing count
 - **The Economic Census** – the official five-year measure of American businesses
 - **The Census of Governments** – the official five-year measure of the nation's state and local government sector

Census of Governments Overview

- The only comprehensive source of uniform statistics on the economic activity of state and local governments.
- Conducted every 5 years in years ending in “2” and “7”
- Measures a governments’ activity over the course of the relevant fiscal year
- Annual surveys are conducted in non-Census years to collect the same data from a sample of governments.



Census of Governments Overview

How is a government defined?

A government is defined as follows, for Census Bureau reporting:

“A government is an organized entity having governmental character, and sufficient discretion in the management of its own affairs to distinguish it as separate from the administrative structure of any other governmental unit within that state.”

- 1 – Existence as an organized entity**
- 2 – Governmental character**
- 3 – Substantial autonomy**

Census of Governments Overview

3 Key Components

Organization

The number and characteristics of governments.

Employment

The total number of employees and payroll of state and local governments.

Finance

Revenues, expenditures, debt, cash and securities, and public pensions data for the state and local governments.

Covers over 90,000 state, county, municipal, township, special district, and school district governments.

Title 13 Section 161 covers the collection of CoG and Title 13 Section 9(b) covers confidentiality.

Public Sector Statistics Include:



Timeline

The program will produce data targeted releases between July 2023 and September 2024. These CoG data products provide unique detailed national, state, and local level statistical measures.



2022 Census of Governments Timeline

High-Level Milestones

Organization

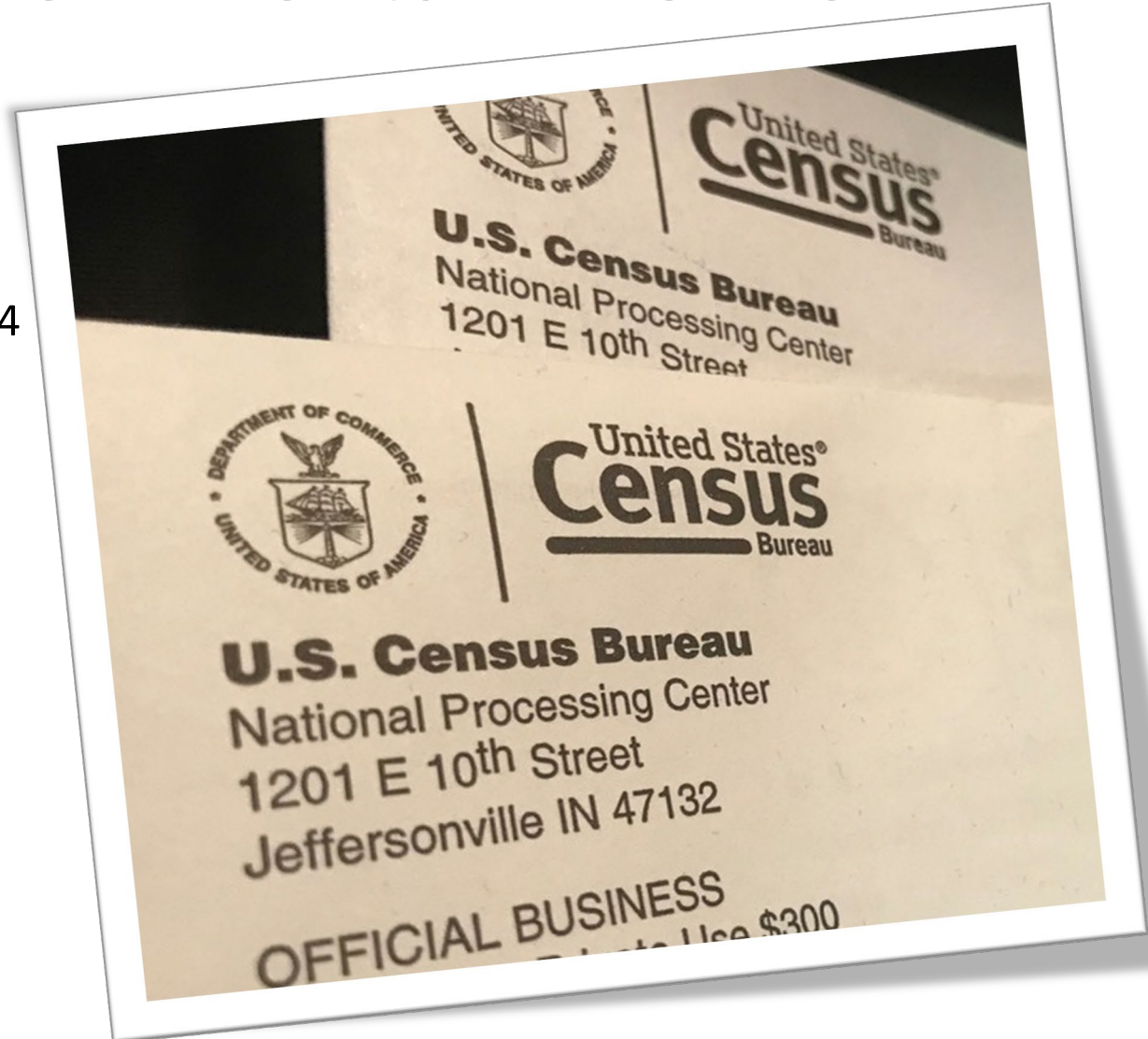
- Mailed in February 2021
- Tables - August 2023 🇺🇸🇺🇸
- Individual State Descriptions - Spring 2024

Employment

- Mailed in March 2022
- Tables - June 2023 🇺🇸🇺🇸

Finance

- Mailed in November 2022
- Tables:
 - State Tax – April 2023 🇺🇸🇺🇸
 - Pensions – June 2023 🇺🇸🇺🇸
 - State Finance – Early 2024
 - School Finance – May 2024
 - State and Local Finance – Fall 2024



Organization Component

Content

- Address and contact information
- Relationships among governments and their agencies
- Classification information
- Historical sampling information

Data Collection

4 Primary Means of Updating Information:

- Legal Research
- Directory Research
- Government Units Survey (GUS)
- Other survey operations

Updates to the frame, called the Governments Master Address File (GMAF), are continual throughout the 5-year cycle

Organization Component

Tables

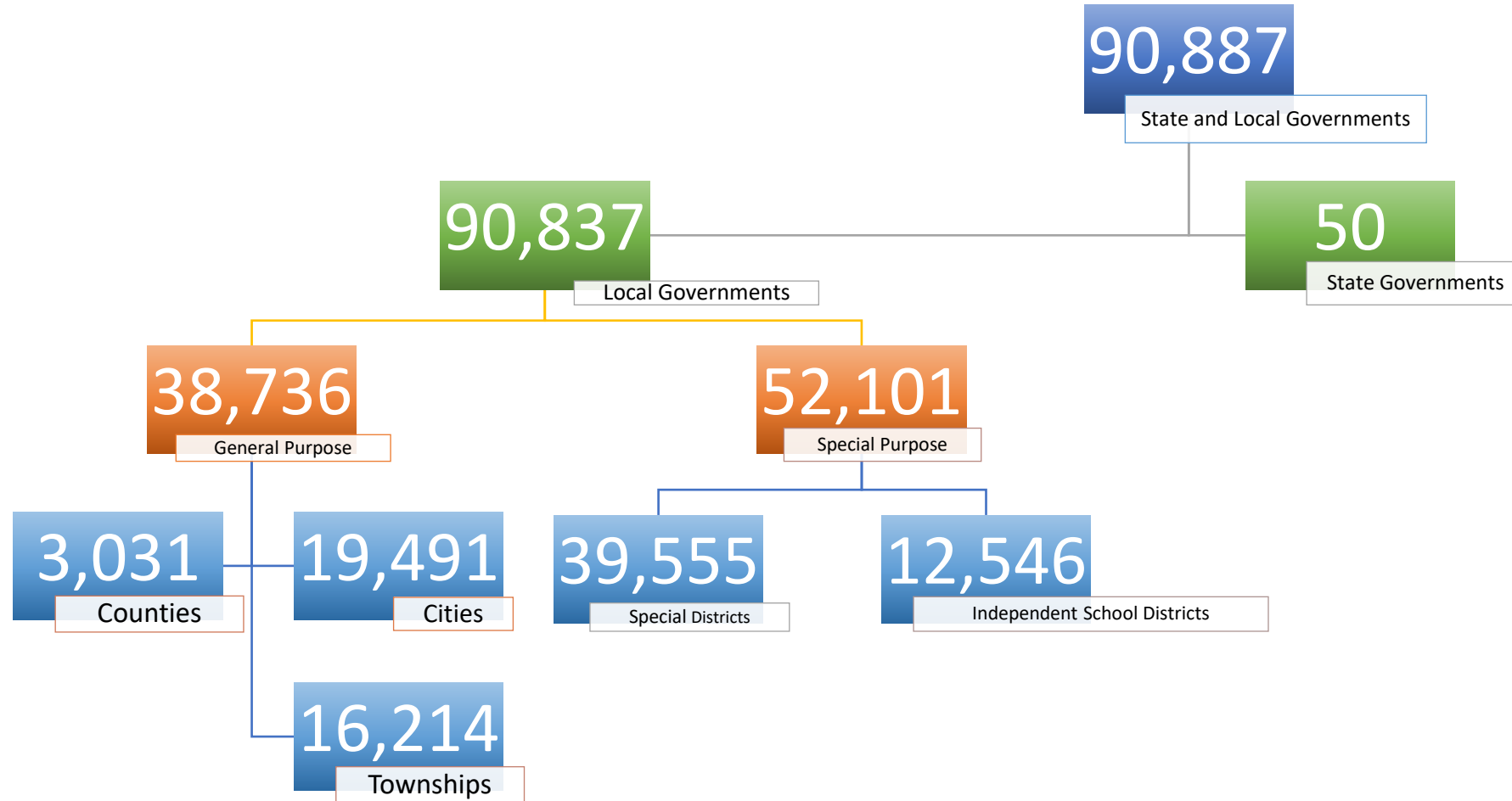
-  [Table 1. Government Units by State: Census Years 1942 to 2022 \[CG2200ORG01\]](#)
-  [Table 2. Local Governments by Type and State: 2022 \[CG2200ORG02\]](#)
-  [Table 3. General-Purpose Local Governments by State: Census Years 1942 to 2022 \[CG2200ORG03\]](#)
-  [Table 4. Special-Purpose Local Governments by State: Census Years 1942 to 2022 \[CG2200ORG04\]](#)
-  [Table 5. County Governments by Population-Size Group and State: 2022 \[CG2200ORG05\]](#)
-  [Table 6. Subcounty General-Purpose Governments by Population-Size Group and State: 2022 \[CG2200ORG06\]](#)
-  [Table 7. Population of Subcounty General-Purpose Governments by Population-Size Group and State: 2022 \[CG2200ORG07\]](#)
-  [Table 8. Special District Governments by Function and State: 2022 \[CG2200ORG08\]](#)
-  [Table 9. Public School Systems by Type of Organization and State: 2022 \[CG2200ORG09\]](#)
-  [Table 10. Elementary and Secondary School Systems by Enrollment-Size Group and State: 2022 \[CG2200ORG10\]](#)
-  [Table 11. Public School Systems by Grade Coverage and State: 2022 \[CG2200ORG11\]](#)

Year	Geographic Area Name	Meaning of Survey Component	Meaning of Aggregate Description	Meaning of Type of Government	Amount
1942	United States	Government Organization	Total Federal, state, and local government units	State and Local	155,116
1952	United States	Government Organization	Total Federal, state, and local government units	State and Local	116,807
1957	United States	Government Organization	Total Federal, state, and local government units	State and Local	102,392
1962	United States	Government Organization	Total Federal, state, and local government units	State and Local	91,236
1967	United States	Government Organization	Total Federal, state, and local government units	State and Local	81,299
1972	United States	Government Organization	Total Federal, state, and local government units	State and Local	78,269
1977	United States	Government Organization	Total Federal, state, and local government units	State and Local	79,913
1982	United States	Government Organization	Total Federal, state, and local government units	State and Local	81,831
1987	United States	Government Organization	Total Federal, state, and local government units	State and Local	83,237
1992	United States	Government Organization	Total Federal, state, and local government units	State and Local	85,006
1997	United States	Government Organization	Total Federal, state, and local government units	State and Local	87,504
2002	United States	Government Organization	Total Federal, state, and local government units	State and Local	87,576
2007	United States	Government Organization	Total Federal, state, and local government units	State and Local	89,527
2012	United States	Government Organization	Total Federal, state, and local government units	State and Local	90,107
2017	United States	Government Organization	Total Federal, state, and local government units	State and Local	90,126
2022	United States	Government Organization	Total Federal, state, and local government units	State and Local	90,888

[CG00ORG01: Government Units: US and ... - Census Bureau Table](#)

Organization Component

2022 Government Counts



Individual State Descriptions

- Summary information about the organization of state and local governments for each State and DC
- <https://www.census.gov/programs-surveys/gus/library/publications.html>

Individual State Descriptions: 2017

2017 CENSUS OF GOVERNMENTS

Released April 2019
017-CG-150



United States[®]
Census
Bureau

U.S. Department of Commerce
Economics and Statistics Administration
U.S. CENSUS BUREAU
[census.gov](https://www.census.gov)

MARYLAND

COUNTY GOVERNMENTS

The entire state of Maryland is encompassed by county governments, with the exception of the area of the city of Baltimore. Baltimore City is an independent city outside the area of any county and is counted as a municipal government, rather than a county government. Baltimore County is a county government, but excludes the area of Baltimore City. A number of counties operate under home-rule charters. These counties are governed by county councils.

In counties without home-rule charters, the county governing body is known as the board of county commissioners. In addition, some counties operate under a special code option, but their governing bodies are still designated as boards of county commissioners.

SUBCOUNTY GENERAL PURPOSE GOVERNMENTS

Municipal Governments

The municipal governments in Maryland are the cities, towns, and villages. There are no differences between city and town governments that would affect their classification for U.S. Census Bureau statistics. All municipal governments in Maryland, except the city of Baltimore, are treated as a single class in state legislation since 1955. Incorporation as a municipality requires a minimum population of 300. There are 20 municipalities with population under 300 that were created prior to 1955. Municipalities operate under home-rule.

Some "villages" in Montgomery County have been formed as special taxing units, rather than incorporated as municipal governments. These are counted as special district governments, rather than as municipal governments in Census Bureau statistics. See "Special District Governments" section.

Township Governments

Maryland has no township governments.

PUBLIC SCHOOL SYSTEMS

School District Governments

Maryland has no independent school district governments.

Dependent Public School Systems

In Maryland, the local public school systems are not counted as separate governments. Maryland statutes

provide for the following types of dependent public school systems:

Systems dependent on county governments:

- County boards of education.
- County and regional community colleges.

System dependent on municipal governments:

- Baltimore City schools.

County schools are administered by a county board of education, which is either appointed by the governor or elected.

County school fiscal requirements are determined and provided for by the county governing body. The county school systems are classified in Census Bureau statistics as dependent agencies of the county government.

Baltimore City schools are governed by a board of commissioners jointly appointed by the governor and the mayor. Fiscal requirements are subject to review and are provided for by the city of Baltimore. The Baltimore City School System is not counted as a separate government in Census Bureau statistics, but is classified as a dependent agency of the city of Baltimore.

Most community colleges in Maryland are classified in Census Bureau statistics as dependent on the county governments for which they serve. Community colleges are governed by a board of trustees appointed by the governor, either with consent of the Senate or on the recommendation of the Maryland Higher Education Commission. Fiscal requirements of the colleges are determined and provided for by the sponsoring county governments. In the case of regional community colleges, which serve two or more counties, each participating county provides its share of the fiscal requirements of the college in proportion to enrollment.

Other Educational Activities

County boards of education may enter into agreements with other county boards of education, other educational institutions or agencies, or the county boards of commissioners or county councils to provide joint services. If a separate administrative entity is created, the agreement specifies the nature of the board and the funding arrangements. As of June 30, 2017, no joint agreements under this provision exist.

Employment Component

Content

Statistics Produced by Function

- Full- and part-time employees
- Full-time equivalent employees
- Gross Payroll

Reference Period

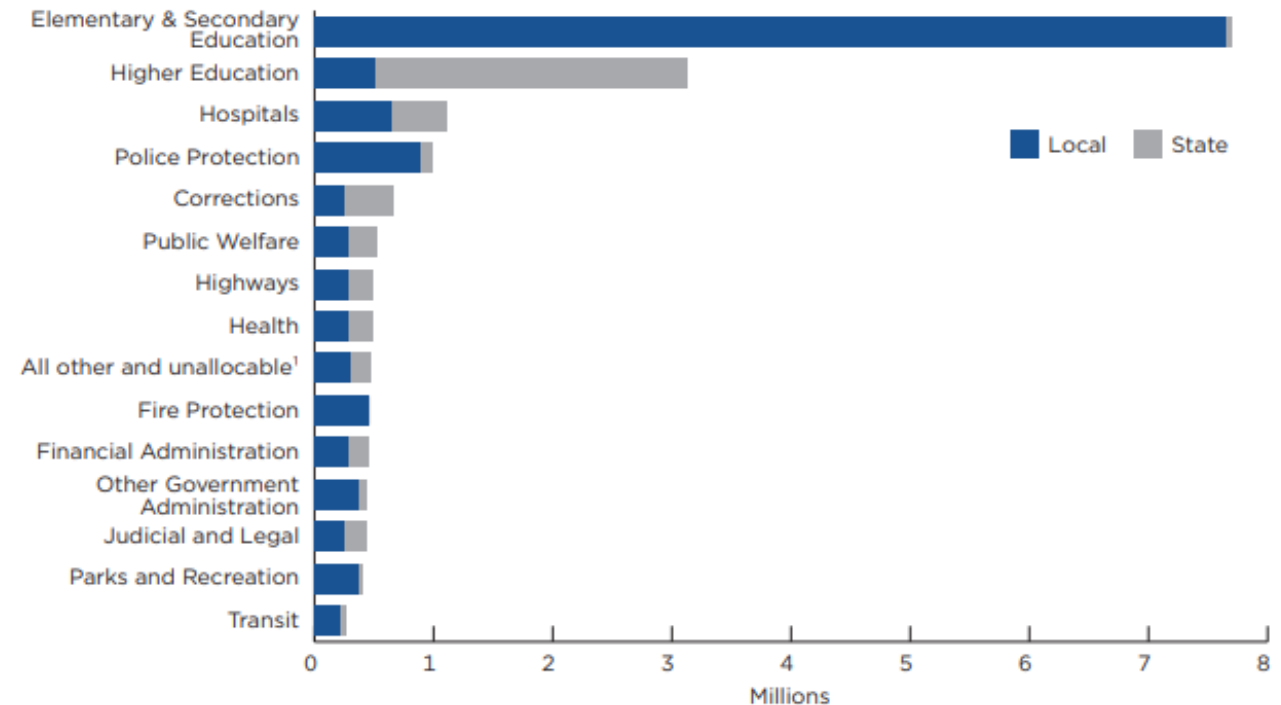
- Pay-period including March 12
- Payroll amounts reflect the month of March

Data Collection

- Combination of electronic administrative record reporting and direct collection for State Governments
- Electronic administrative record reporting by large local governments and other local government data collected via internet reporting tool

Figure 1.

Top 15 Functions: Total State and Local Government Employment



¹"All other and unallocable" is not a summation of the remaining functions shown separately in the source data, it refers only to employees not applicable to other employment functions.

Note: The survey data and technical documentation can be found at <www.census.gov/programs-surveys/apes.html>.

Source: U.S. Census Bureau, 2022 Census of Governments, Survey of Public Employment & Payroll.

Total Government Employment by Function: 2022

https://www.census.gov/content/dam/Census/library/publications/2023/econ/2022_summary_brief.pdf

Finance Component

Content

Categories

- Revenues by source
- Expenditures by function and object
- Debt and assets
- Public pensions

Tabulations are produced by state and by type of government

Reference Period

Fiscal year ending on June 30, except for four states

Data Collection Methods

- Compilation from Administrative Records
- Central Collection
- Direct collection via internet reporting tool

Publication Flow

- State Tax Collections
- Public Pensions
- State Government Finances
- School Finance (F-33)
- State and Local Government Finances

Finance Component – State Tax Collections

- Statistics produced
 - 5 broad tax categories
 - Up to 25 tax subcategories depending on State tax structure
- Geography covered
 - All 50 States plus DC
- Release date for 2022 CoG
 - Published in April 2023

Items
Total Taxes
Property Taxes
Sales and Gross Receipts Taxes
General Sales and Gross Receipts Taxes
Alcoholic Beverages Sales Tax
Amusements Sales Tax
Insurance Premiums Sales Tax
Motor Fuels Sales Tax
Pari-mutuels Sales Tax
Public Utilities Sales Tax
Tobacco Products Sales Tax
Other Selective Sales and Gross Receipts Taxes
License Taxes
Alcoholic Beverages License
Amusements License
Corporations in General License
Hunting and Fishing License
Motor Vehicles License
Motor Vehicle Operators License
Public Utilities License
Occupation and Businesses License, NEC
Other License Taxes
Income Taxes
Individual Income Taxes
Corporation Net Income Taxes
Other Taxes
Death and Gift Taxes
Documentary and Stock Transfer Taxes
Severance Taxes
Taxes, NEC

Finance Component – Public Pensions

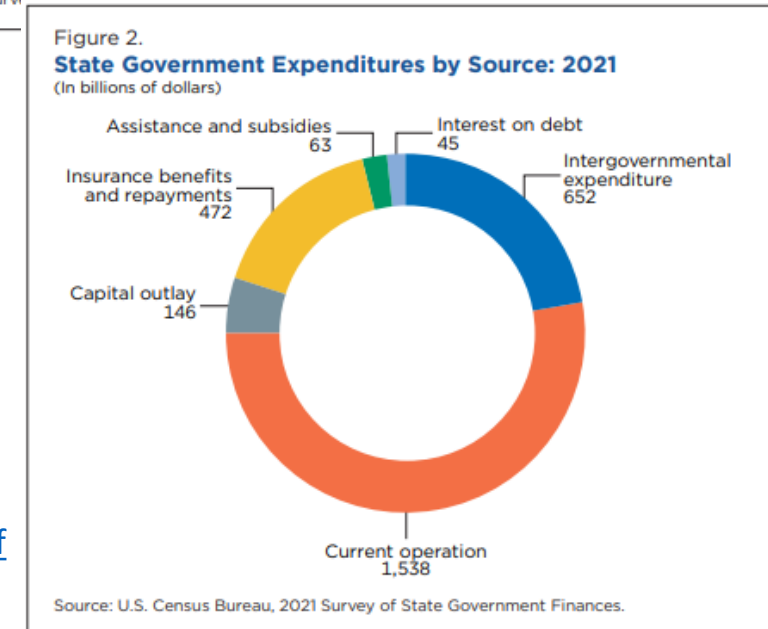
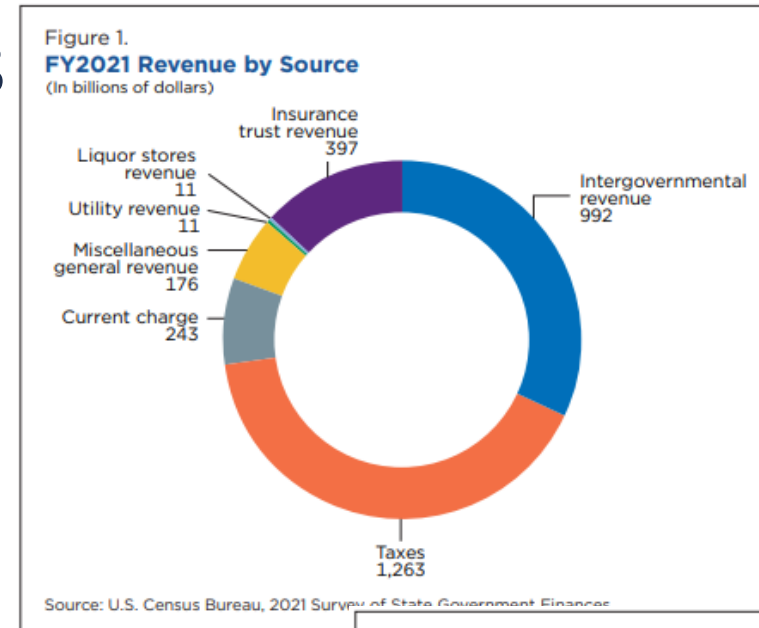
- Statistics produced
 - Revenues, expenditures, financial assets, and membership information
- Geography covered
 - All 50 states and DC
 - By state/local/state and local breakouts
- Release date for 2022 CoG
 - Published in June 2023

*Coverage is for defined benefit public-employee pension plans; no private pensions are included.

Items
Total Contributions
Employee contributions
Government contributions
Earnings on investments
Interest and Dividends
Interest
Dividends
Other Earnings
Gains/Losses on Investments
Total Benefits Paid
Administrative Costs
Withdrawals
Total cash and investments
Total cash and short-term investments
Total Long-Term Investments
Number of systems
Total Membership
Active membership
Inactive Members
Total beneficiaries receiving periodic benefit payments

Finance Component – State and Local Government Finances

- Statistics produced
 - Revenues, expenditures, and debt
 - By source and function
- Geography covered
 - All 50 states and DC
 - By state/local/state and local breakouts
- Release dates for 2022 CoG
 - State Finance – Early 2024
 - Local Finance – Late 2024



Finance Component – School Finances

- Statistics produced
 - Revenues, expenditures, debt, and assets of elementary and secondary public school systems over 20 tables
- Geography covered
 - All 50 States plus DC
- Release date for 2022 CoG
 - Preliminary data released October 2023
 - May 2024

Census of Governments Uses

How is this data relevant to users?

- The traffic camera fine you paid to your town (Finance)
- The formation of a new school district in your county (Organization)
- The number of police employed by your city (Employment)
- The property taxes collected by your county (Finance)
- The salary of your children's public-school teacher (Employment)
- Contributions to your county's firefighter pension plan (Finance)
- The county hospital being taken over by a private company (Organization)
- The debt issued to your town to pay for building a new ballpark (Finance)

Census of Governments Uses

What is it used for?

- Development of the government component of GDP
- Development of the national income accounts
- Development of personal income figures for state and county areas
- Allocation of certain federal grant funds
- Legislative research
- Comparative studies of state and local government finance
- Public and fiscal policy and research

Where to find data...

- Data.census.gov
 - <https://data.census.gov/>
- Census Website
 - <https://www.census.gov/programs-surveys/surveys-programs.html>
 - Census of Governments
 - Annual Survey of: Public Employment and Payroll, Public Pensions, School System Finances, State Government Finances, State Government Tax Collections, and State and Local Government Finances
- Census API
 - GOVSTIMESERIES

Data.census.gov Demo

 An official website of the United States government [Here's how you know](#) ▾



[Tables](#) [Maps](#) [Profiles](#) [Pages](#) [Microdata](#)

Explore Census Data

Learn about America's People, Places, and Economy

Find Tables, Maps, and more ...



[Help](#) [Feedback](#) [Advanced Search](#)

Try searching for [grocery stores](#) in [Georgia](#) in [2017](#)

<https://data.census.gov/>



Additional Reference Materials

Census of Governments Website

<https://www.census.gov/programs-surveys/cog.html>

Census of Governments Infographic

<https://www.census.gov/library/visualizations/2020/econ/2022-cog-infographic.html>

Census of Governments Snapshot Tool

<https://www.census.gov/library/visualizations/interactive/state-local-snapshot.html>

Census of Governments Classification Manual

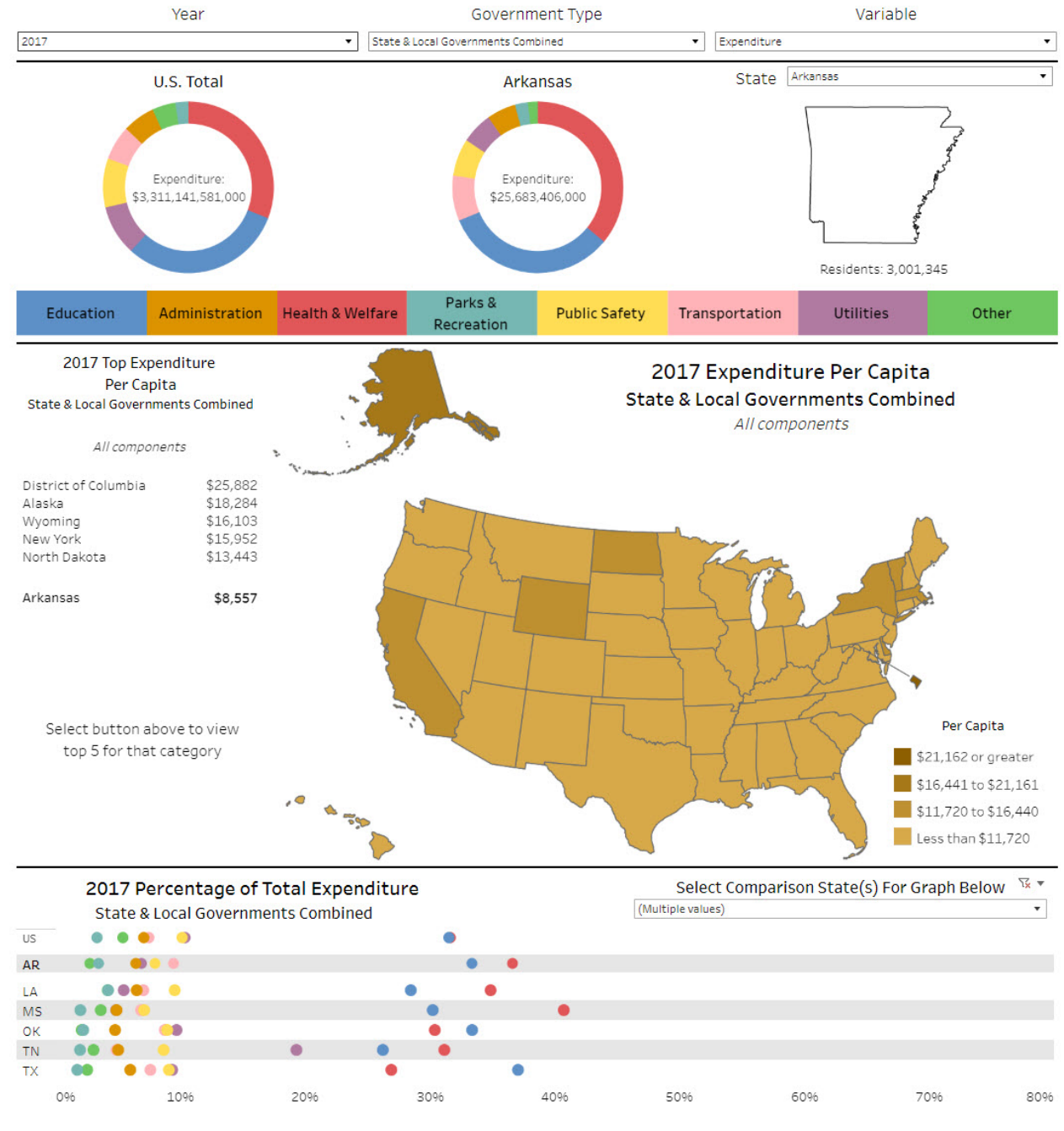
https://www2.census.gov/govs/pubs/classification/2006_classification_manual.pdf

Data.Census.gov topics

- Government
- Government Employment and Payroll
- State and Local Government Finances
- Public Pension Systems
- Taxation Revenue



2017 State & Local Governments Combined Expenditure



Thank You!

Michael Reich, Assistant Division Chief, Public Sector, U.S. Census Bureau

michael.r.reich@census.gov