

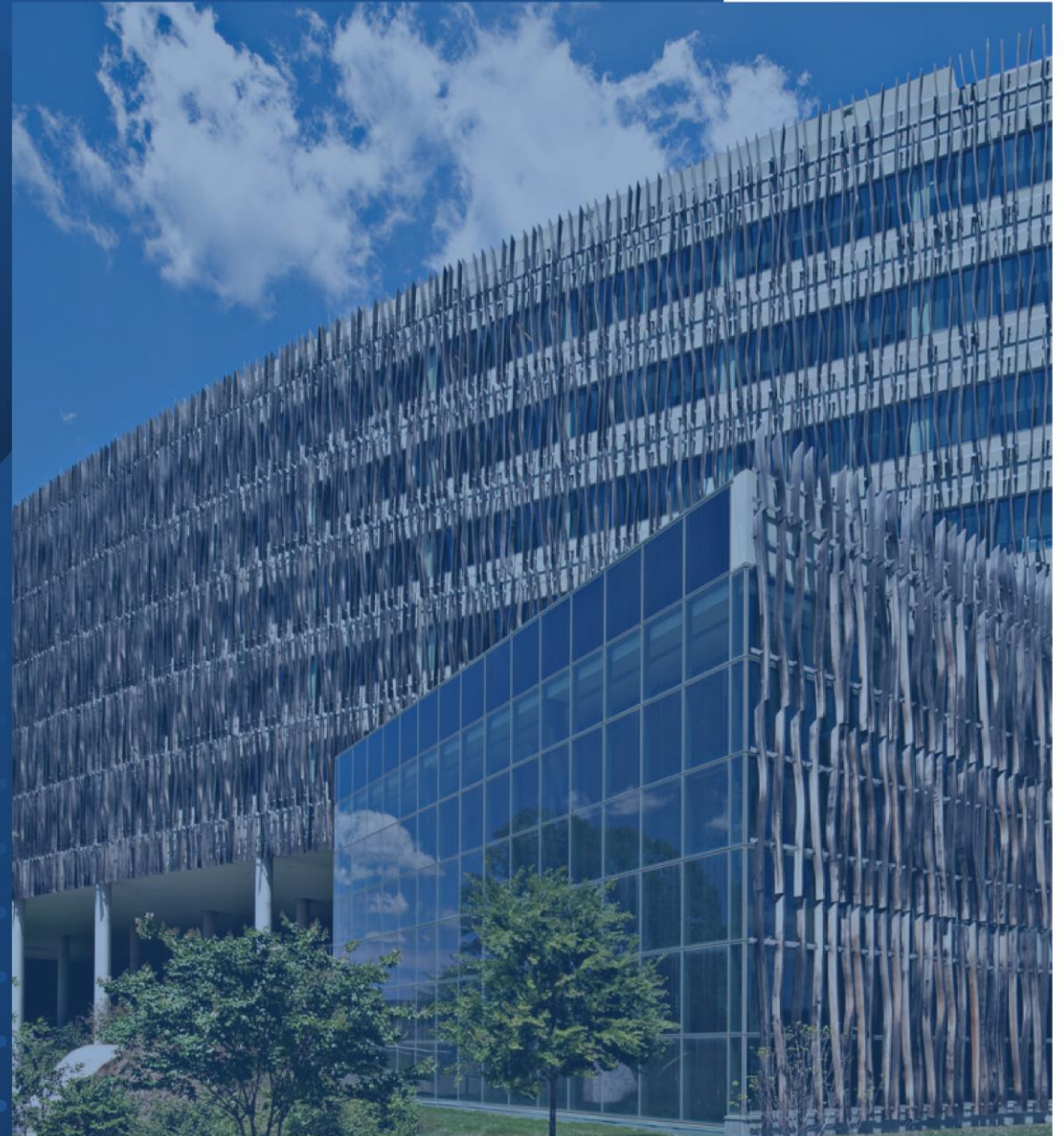
# Overview: data.census.gov 101

September 14, 2023

Federal Depository Library Program

Ileana Serrano

U.S. Census Bureau, Data Dissemination and Training Branch  
Customer Liaison & Marketing Services Office - CLMSO/HQ



# Meet Your Presenter

**Ileana Serrano** serves as the Data Dissemination Specialist for Illinois and Indiana. She is a veteran of three Decennial Censuses and has been with the Bureau for over 30 years.

Ms. Serrano's primary responsibilities are to plan, coordinate, and implement Census data dissemination, outreach, engagement, and training and is available to assist in your Census data experience.



# Data Dissemination and Training

- ✓ **Bring our data experts to you.**

Request a free data training for your organization.

- ✓ **Receive our Data Gems.**

These short “how-to” videos are an easy and quick way to increase your knowledge of Census data. Get them in your inbox!

- ✓ **Get access to our Courses.**

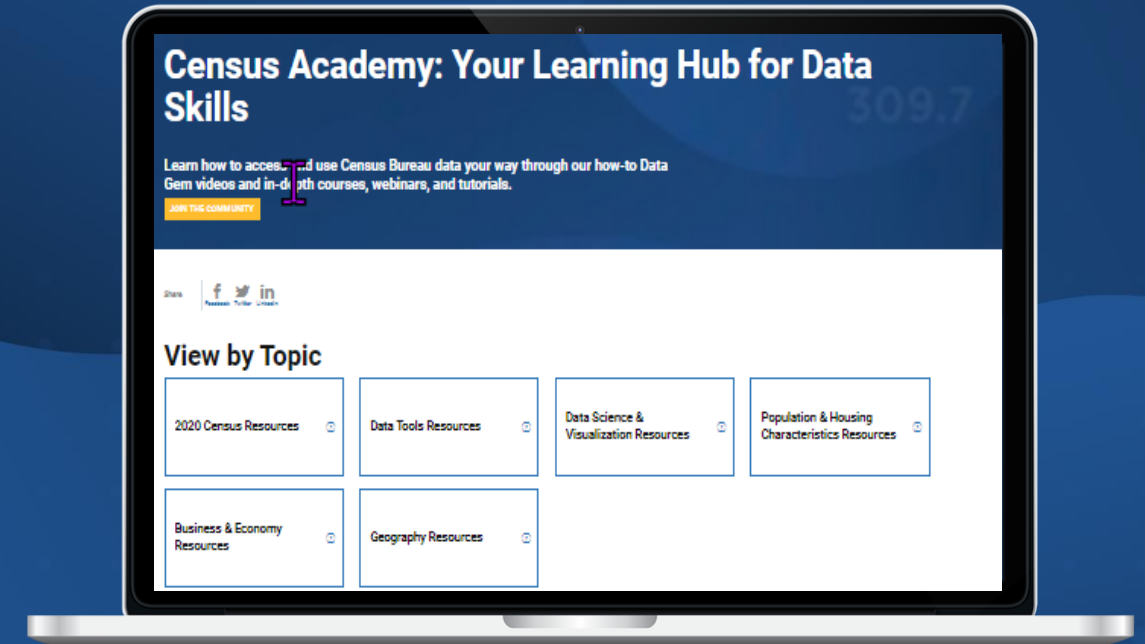
You will learn-at-your-own-pace with these video-tutorials designed for different skill levels.

- ✓ **Interact with our instructors via Webinars.**

Learn about our data releases and tools while attending these live virtual classes.



# Census.gov/Academy



**Contact us:**

[Census.askdata@census.gov](mailto:Census.askdata@census.gov)

1-844-ASK-DATA

*Share your ideas and feedback at  
[census.academy@census.gov](mailto:census.academy@census.gov)*



# Objectives

## Today You Will

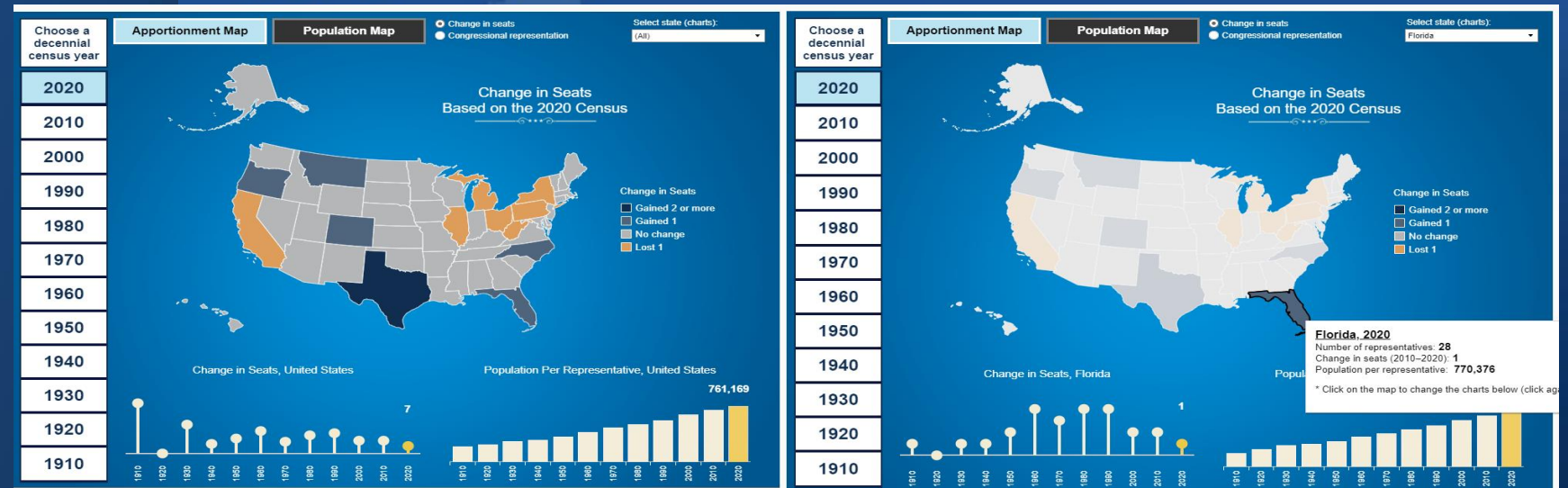
- ✓ Learn the differences between Decennial, Program, and Survey Data.
- ✓ Learn about the resources available.
- ✓ Learn what tools are used to access data.
- ✓ View an online demonstration on how to access data using Quick Facts and [data.census.gov](https://data.census.gov).

# Decennial Census



Mandated by the Constitution of the United States, Article I, Section 2, directs that a census or enumeration be taken.

## 2020 CENSUS



- Decennial Census results are used to calculate or “apportion” the number of **Representatives** to which each state is entitled.
- Decennial Census results are used to conduct legislative redistricting.
- About **320 federal programs** rely on data derived from the decennial census to geographically distribute over \$2.8 trillion annually.
- <https://www.census.gov/library/visualizations/interactive/historical-apportionment-data-map.html>

# Population Estimates

- Produces most up-to-date population numbers between decennial censuses.
- Provides population counts for nation, state, metro areas, counties, and incorporated places.
- Housing unit totals are available at national and state levels.
- 2022 Population Estimates will be available on a flow basis through 2023.
- **Population Estimates Program (PEP)** data used to allocate funding to the states and local governments, including funding under the **CARES Act**, for example.
- Used mainly for research purposes.

## Key Dates Vintage 2022

- December 2023: National and state
- March 2023: County and metro/micro areas
- May 2023: City/towns
- May 2023: National State County Housing units
- June 2023: National, state and county demographics
- **Key Dates Vintage 2023**
- December 2023: National and state

<https://www.census.gov/programs-surveys/popest/about/schedule.html>

# American Community Survey

- Ongoing monthly survey sent to 3.5 million addresses/year.
- Data goes back to 2005.
- Produces timely data for small areas and population groups previously collected on the decennial long form.
- Covers 40+ topics (employment, occupation, veteran status, commuting, etc.) and supports 300+ known federal government uses.
- Estimates released annually.
- Compare nonoverlapping data sets
- <https://www.census.gov/programs-surveys/acs>



## Key Dates for Vintage 2022

- ACS 1 Year: September
- ACS 1 Year Sup: October
- ACS 5 Year: December



# American Community Survey Topics

POPULATION		HOUSING	
<b>SOCIAL DP02</b> Ancestry Citizenship Citizen Voting Age Population Disability Educational Attainment Fertility Grandparents Language Marital Status Migration School Enrollment Veterans	<b>DEMOGRAPHIC DP05</b> Age Hispanic Origin Race Relationship Sex	Computer & Internet Use Costs (mortgage, rent, taxes, insurance) Heating Fuel Home Value Occupancy Plumbing/Kitchen Facilities Structure Tenure (own/rent) Utilities Vehicles Year Built/ Year Moved In	<b>DP03</b> <b>ECONOMIC</b> Class of Worker Commuting Employment Status Food Stamps (SNAP) Health Insurance Hours/Week, Weeks/Year Income & Poverty Industry & Occupation
			<b>DP04</b>



# ACS Period Estimates

## 1-Year Estimates

- Geographies of 65,000 or more in population

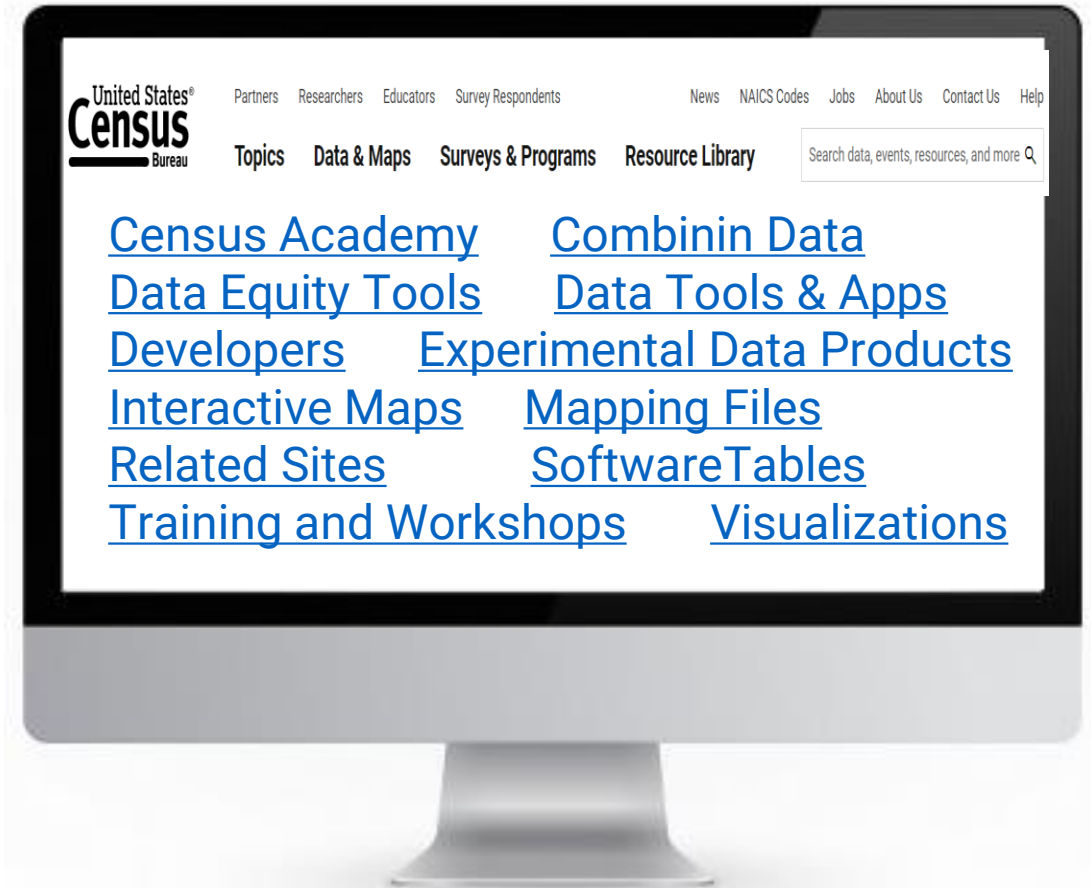
## 5-Year Estimates

- All geographies

# Surveys & Programs

[2020 Census](#)[2030 Census](#)[American Community Survey \(ACS\)](#)[American Housing Survey \(AHS\)](#)[Annual Business Survey \(ABS\)](#)[Annual Survey of Manufactures \(ASM\)](#)[Census of Governments](#)[County Business Patterns \(CBP\)](#)[Current Population Survey \(CPS\)](#)[Economic Census](#)[International Programs](#)[Metro and Micro Areas](#)[Population Estimates](#)[Population Projections](#)[Small Area Income and Poverty Statistics of U.S. Businesses](#)[Survey of Business Owners](#)[Survey of Income and Program Participation \(SIPP\)](#)

# Data Tools



## Census Survey Explorer

Discover U.S. Census Bureau surveys or censuses by filtering and searching by geography, frequency, topics, and subtopics.



Search by name or keyword

Geographies ▾

Frequencies ▾

Topics ▾

Subtopics ▾

Reset Search

# Online Demonstration

## Explore Census Data

Learn about America's People, Places, and Economy

Find Tables, Maps, and more ...

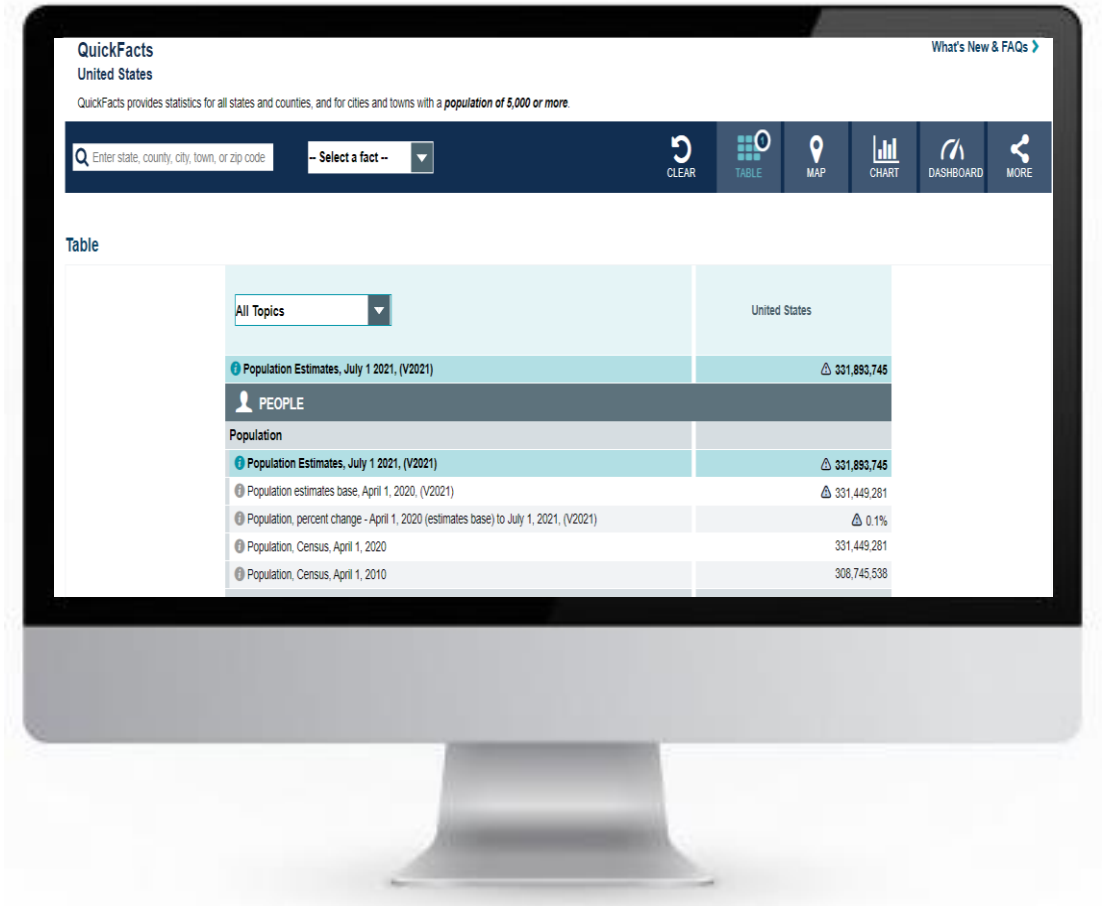


[Help](#) [Feedback](#) [Advanced Search](#)

Try searching for [poverty](#) in [Georgia](#) in [2020](#)

<https://data.census.gov/cedsci/>

<https://www.census.gov/quickfacts/fact/table/US/PST045221>





## Resources on census.gov

Data.census.gov advanced search

<https://data.census.gov>

Census Survey Explorer

<https://www.census.gov/data/data-tools/survey-explorer/>

My Community Explorer

<https://experience.arcgis.com/experience/13a111e06ad242fba0fb62f25199c7dd/>

Community Resilience Estimates

<https://experience.arcgis.com/experience/b0341fa9b237456c9a9f1758c15cde8d/>

Census Business Builder (CBB)

<https://www.census.gov/data/data-tools/cbb.html>

North American Industry Classification System (NAICS)

<https://www.census.gov/naics/>

On The Map

<https://onthemap.ces.census.gov>

Response Outreach Area Mapper (ROAM)

<https://census.gov/roam>

Quick Facts Profiles, Population >5000

<https://www.census.gov/quickfacts>

My Congressional District

<https://www.census.gov/mycd/>

My Tribal Area

<https://www.census.gov/tribal>



## Non-Census Sites

Census Reporter

<https://censusreporter.org/>

Social Explorer

<https://www.socialexplorer.com/>

Small Business Administration

<https://www.usa.gov/business>

Other Federal Statistical Agencies

<https://www.usa.gov/statistics>

Missouri State Data Center

<http://mcdc2.missouri.edu>

Minnesota Compass

<https://www.mncompass.org/>

The Opportunity Atlas

<https://www.opportunityatlas.org/>

Data.Gov

<https://data.gov/>

Tribal Leaders Directory

<https://www.bia.gov/bia/ois/tribal-leaders-directory/>

National Congress of American Indians (NCAI)

Minnesota State Demographer

<https://mn.gov/admin/demography/>

Minnesota Population Center

<https://www.pop.umn.edu/>

IPUMS

<https://www.ipums.org/>

National Historical Geographic Information System (NHGIS)

<https://www.nhgis.org/>

FRED Economic Data

<https://fred.stlouisfed.org/>

GeoFRED

<https://geofred.stlouisfed.org/>

Federal Statistical Research Data Center

<https://www.census.gov/about/adrm/fsrd>

[c/locations/kansas-city.html](https://www.census.gov/about/adrm/fsrd/c/locations/kansas-city.html)

[https://www.ncai.org/tribal-](https://www.ncai.org/tribal-directory?page=9)

[directory?page=9](https://www.ncai.org/tribal-directory?page=9)

National Tribal Geographic Information Support Center (NTGIS)

<https://www.tribalgis.com/>

## Complete list of Census Tools

<https://www.census.gov/data/data-tools.html>

## Recap

# Today You Learned

- ✓ Learned the differences between Decennial, Program, and Survey Data.
- ✓ Learned about the resources available.
- ✓ Learned of some tools used to access data.
- ✓ Viewed online demonstrations on how to access data using Quick Facts and [data.census.gov](https://data.census.gov).

## Get in Touch With Us

---



Ileana Serrano  
U.S. Census Bureau  
Data Dissemination and Training Branch

[ileana.c.serrano@census.gov](mailto:ileana.c.serrano@census.gov)

[Census.askdata@census.gov](mailto:Census.askdata@census.gov)

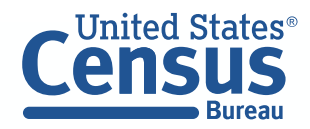
1844-ASKDATA

<https://questionweb.com/59212>

@uscensusbureau

Subscribe: [Census.gov/academy](https://census.gov/academy)





THANK  
YOU