



# The American Community Survey: A Comprehensive Look

---

Noelia Ana Moussignac  
Data Dissemination Specialist

# The American Community Survey

## Agenda



American Community  
Survey (ACS) basics



Accessing ACS data  
products



Demonstration of  
ACS data tools



Resources for  
learning more



Questions

# The American Community Survey

## About the U.S. Census Bureau

### The United States Census Bureau

#### Who are we?

The U.S. Census Bureau is the federal government's largest statistical agency.



#### Censuses & Surveys

We conduct more than 100 censuses & surveys each year, including:

- The Decennial Census
- The American Community Survey
- The Economic Census



#### Our Mission

Our mission is to serve as the nation's leading provider of quality data about its people & economy.





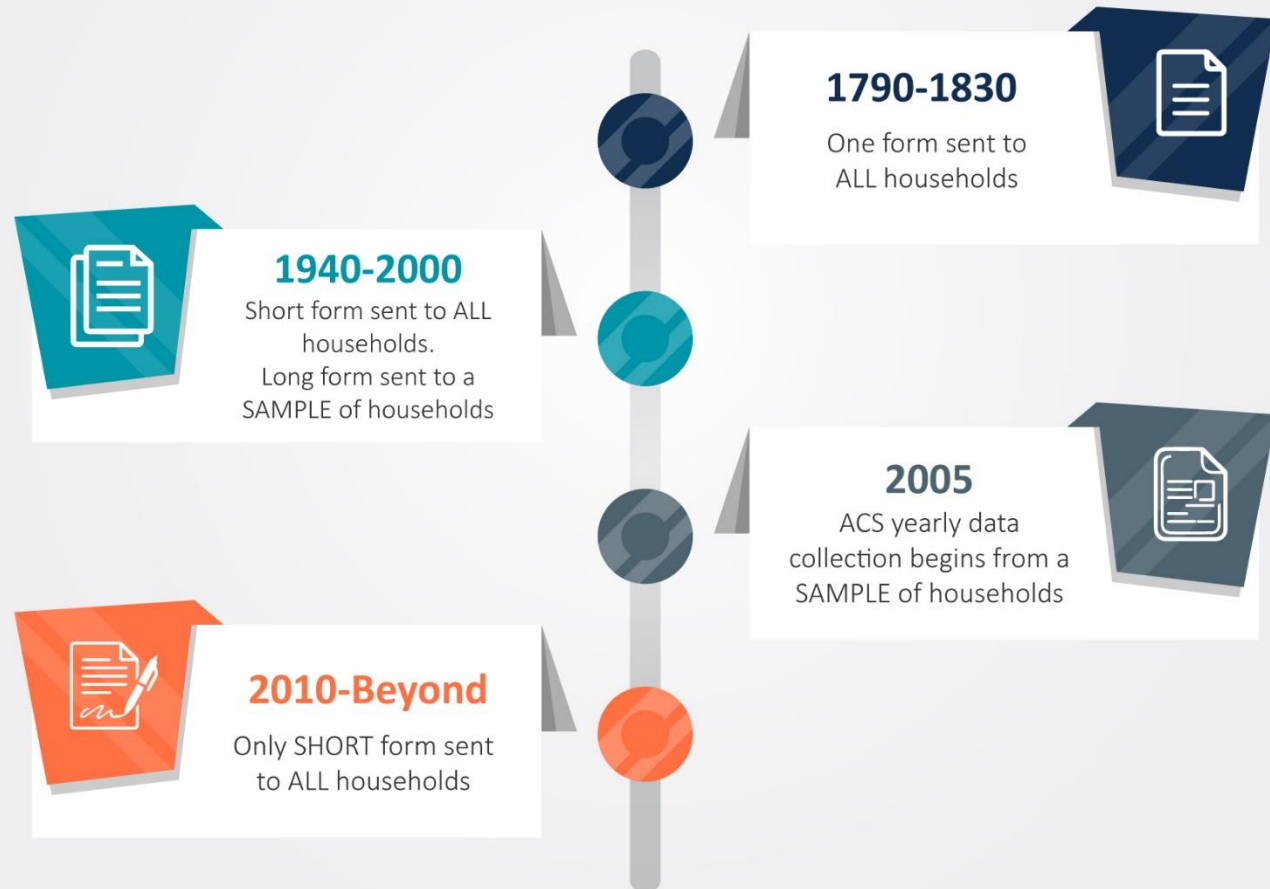
# The American Community Survey

## The Foundation

The American Community Survey is on the leading edge of survey design, continuous improvement, & data quality.

- The nation's most current, reliable, & accessible data source for local stats on critical planning topics
- Surveys 3.5 million addresses & informs over \$2.8 trillion of Federal government spending each year
- Covers 40+ topics, supports over 300 evidence-based Federal government uses, & produces 11 billion estimates each year
- Three key annual data releases:
  - *1-year Estimates (for large populations)*
  - *1-year Supplemental Estimates (for small populations)*
  - *5-year Estimates (for very small populations)*

# EVOLUTION OF THE DECENNIAL CENSUS



The American  
Community Survey

History

# The American Community Survey

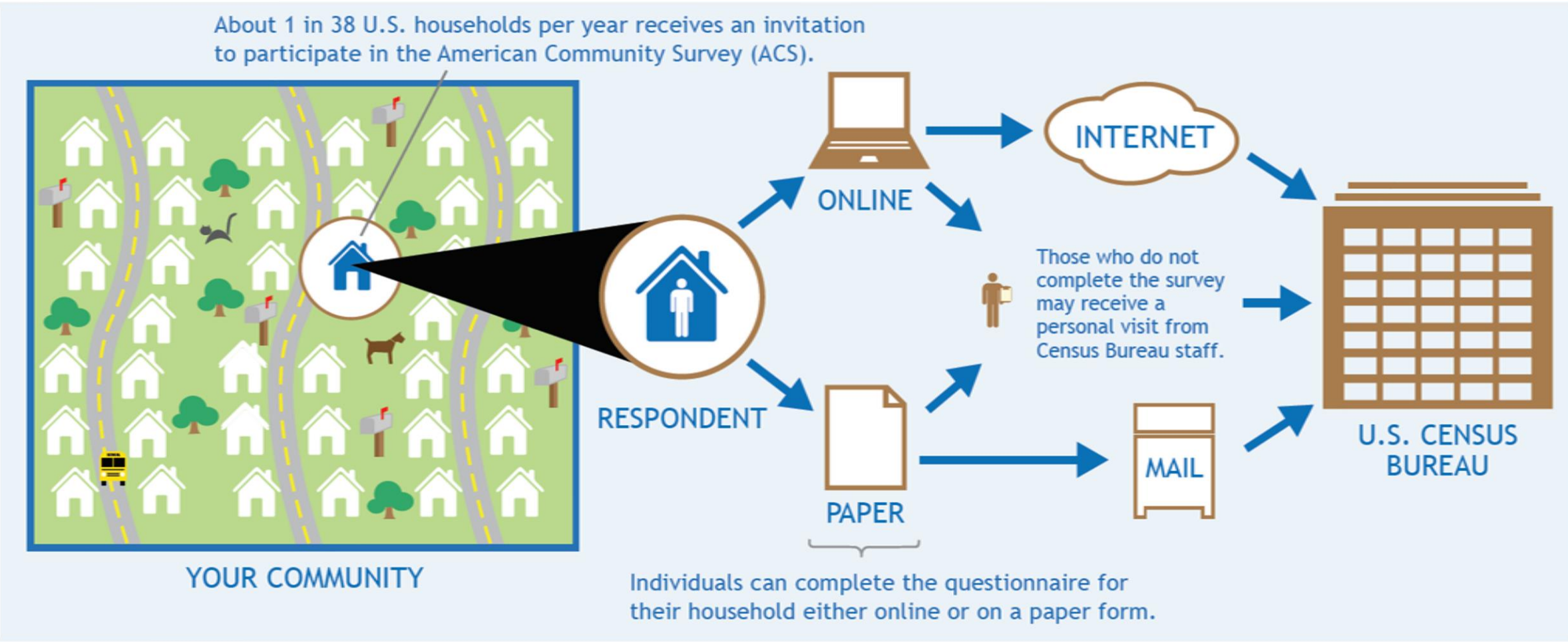
## How is the American Community Survey Different from a Census?

	ACS	Census
Purpose	Sample estimates	Official counts
Collects	Detailed social, economic, housing, & demographic characteristics	Basic demographics
Produces	Population & housing characteristics	Population & housing totals
New Data Every	Year	10 years
Data Reflect	Period of time	Point in time



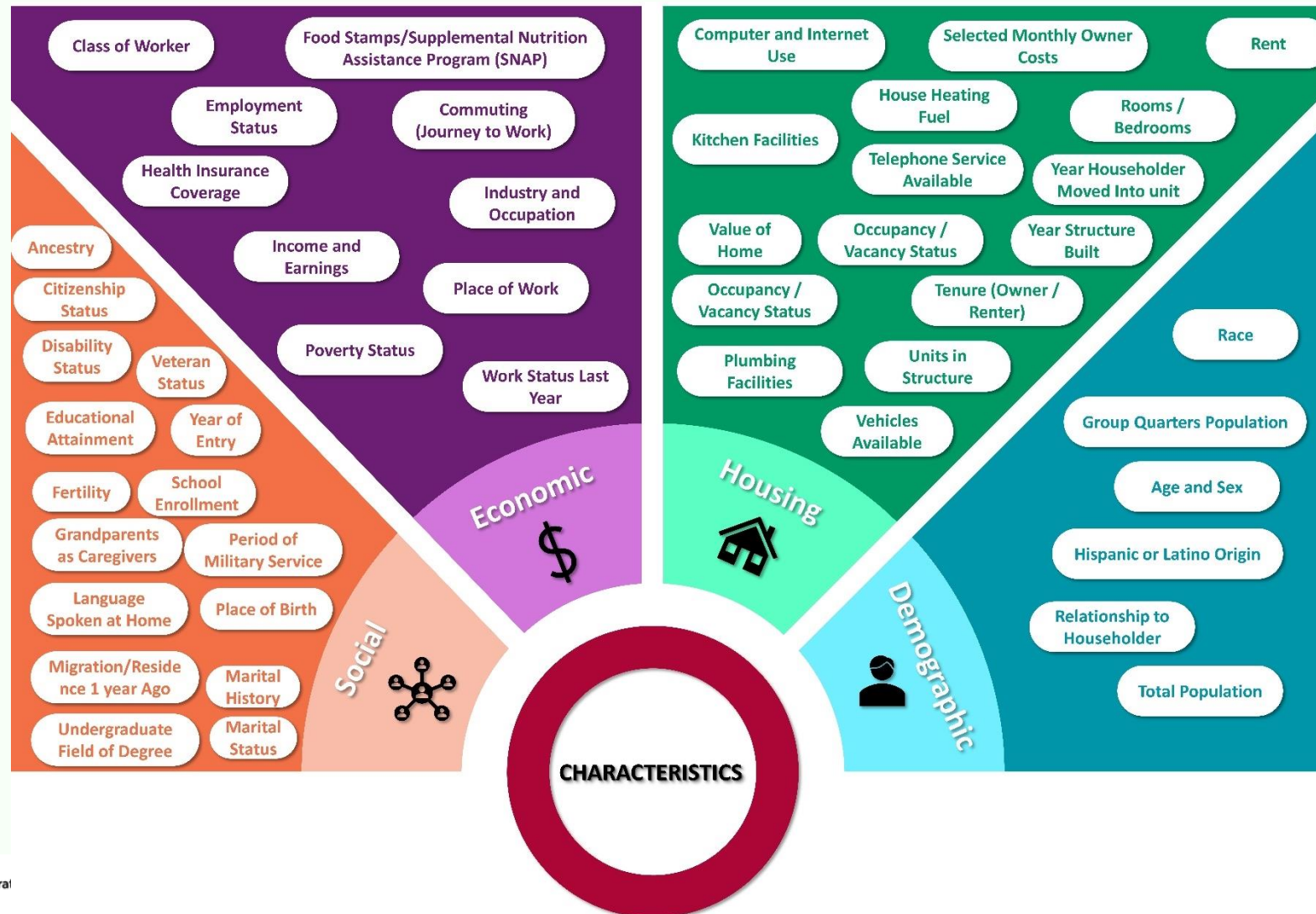
# The American Community Survey

## How is the American Community Survey Different from a Census?



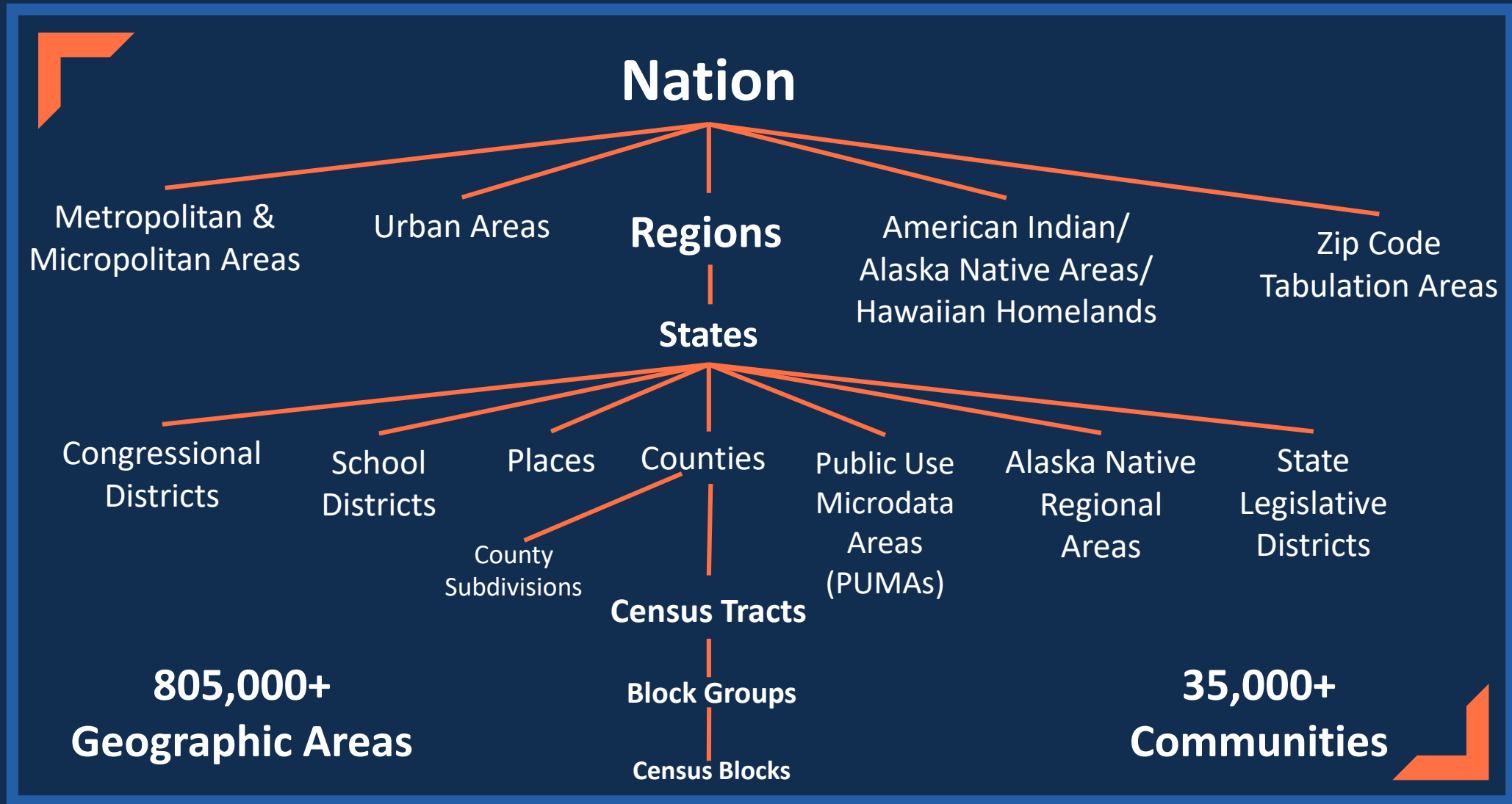
# The American Community Survey

## Content Overview





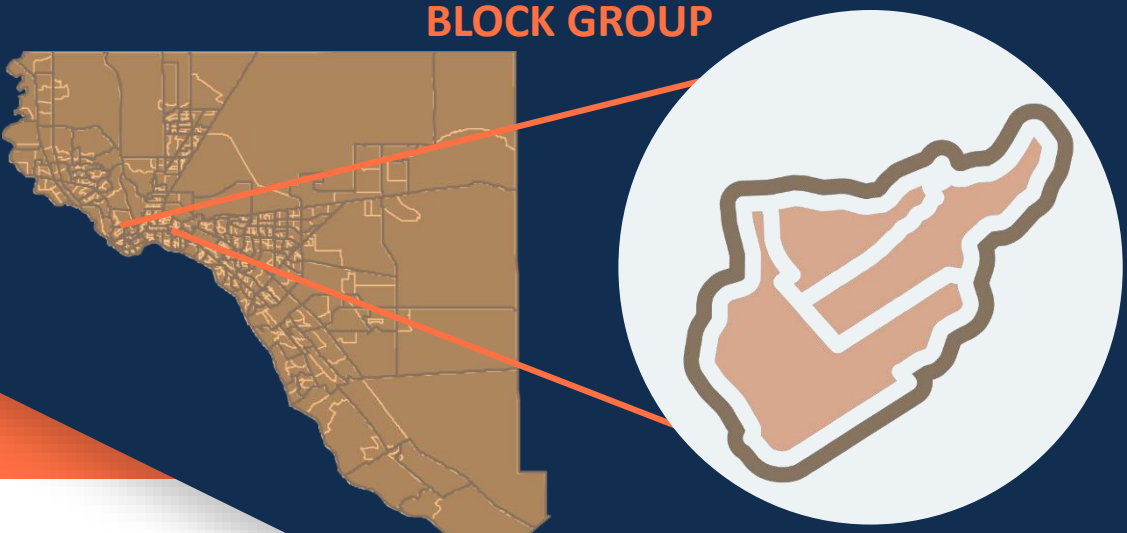
# The American Community Survey



## Selected Census Geographic Concepts

# The American Community Survey

## Selected Census Geographic Concepts



# The American Community Survey Data Products



## Data Availability

Estimated Population of Geographic Area	1-Year Estimates	1-Year Supplemental Estimates	5-Year Estimates
65,000 or more	✓	✓	✓
20,000 to 64,999		✓	✓
Less than 20,000			✓

[census.gov/programs-surveys/acs/news/data-releases.html](https://census.gov/programs-surveys/acs/news/data-releases.html)

# The American Community Survey Selected Ways to Access Data

- QuickFacts
- My Congressional District
- My Tribal Area
- OnTheMap for Emergency Management
- Census Business Builder
- TIGER/Line Shapefiles w/ Selected Demographic Data
- Application Programming Interface (API)
- data.census.gov



# The American Community Survey QuickFacts

## Dashboard - United States

Population Estimates, July 1, 2022, (V2022)

All Topics ▼ United States

**Population Estimates, July 1, 2022, (V2022)** ▲ 333,287,557

**PEOPLE**

**Population**

<b>Population Estimates, July 1, 2022, (V2022)</b>	<span>▲</span> 333,287,557
Population estimates base, April 1, 2020, (V2022)	<span>▲</span> 331,449,520
Population, percent change - April 1, 2020 (estimates base) to July 1, 2022, (V2022)	<span>▲</span> 0.6%
Population, Census, April 1, 2020	331,449,281
Population, Census, April 1, 2010	308,745,538

**Age and Sex**

Persons under 5 years, percent	<span>▲</span> 5.6%
Persons under 18 years, percent	<span>▲</span> 21.7%
Persons 65 years and over, percent	<span>▲</span> 17.3%
Female persons, percent	<span>▲</span> 50.4%

**Race and Hispanic Origin**

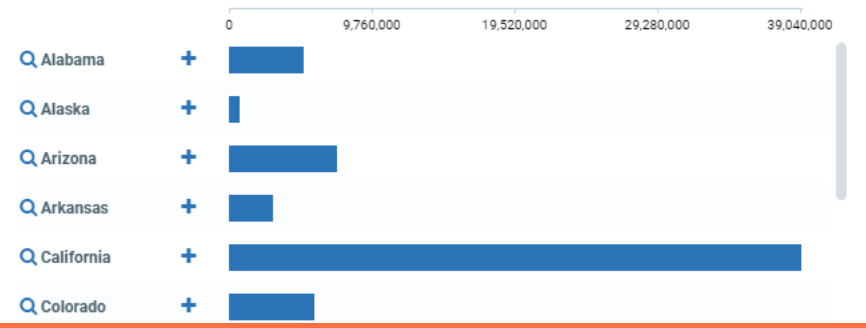
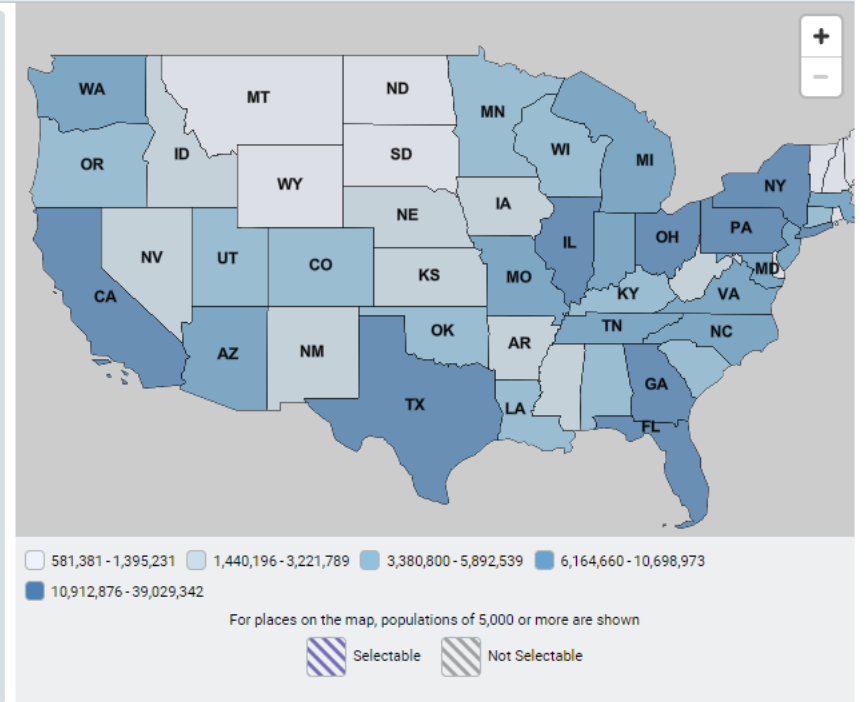
White alone, percent	<span>▲</span> 75.5%
Black or African American alone, percent (a)	<span>▲</span> 13.6%
American Indian and Alaska Native alone, percent (a)	<span>▲</span> 1.3%
Asian alone, percent (a)	<span>▲</span> 6.3%
Native Hawaiian and Other Pacific Islander alone, percent (a)	<span>▲</span> 0.3%
Two or More Races, percent	<span>▲</span> 3.0%
Hispanic or Latino, percent (b)	<span>▲</span> 19.1%
White alone, not Hispanic or Latino, percent	<span>▲</span> 58.9%

**Population Characteristics**

Veterans, 2017-2021	17,431,290
Foreign born persons, percent, 2017-2021	13.6%

**Housing**

Population in housing units, July 1, 2022, (V2022)	143,766,655
--	-------------





# The American Community Survey

## My Congressional District

**115th Congress**  
**My Congressional District**

1 Select a State

2

People Workers Housing Socio-Economic Education Business

My Congressional District gives you quick and easy access to selected statistics collected by the U.S. Census Bureau through the **American Community Survey (ACS)** and **County Business Patterns (CBP)**. The ACS provides detailed demographic, social, economic, and housing statistics every year for the nation's communities. CBP provides annual statistics for businesses with paid employees at a detailed geography and industry level. My Congressional District is powered by ACS and CBP data through the **Census Application Programming Interface (API)**.

**Sources: 2017 American Community Survey 1-Year Estimates and 2016 County Business Patterns**

Need help finding your Congressional District?  
Enter ZIP code

United States Census Bureau  
U.S. Department of Commerce  
Economics and Statistics Administration  
U.S. CENSUS BUREAU  
census.gov

POWERED BY  
The American Community Survey and County Business Patterns

**116th Congress**  
**My Congressional District**

1 New York

2 Congressional District 14

People Workers Housing Socio-Economic Education Business

**Congressional District 14 (116th Congress), New York**  
Source: 2018 American Community Survey 1-Year Estimates

**Housing Occupancy**

- Total housing units
- Occupied housing units
- Vacant housing units
- Homeowner vacancy rate
- Rental vacancy rate

**Housing Tenure**

- Occupied housing units
- Owner-occupied
- Renter-occupied
- Average household size of owner-occupied
- Average household size of renter-occupied

**Year Householder Moved into Unit**

- Occupied housing units
- Moved in 2015 or later

Need help finding your Congressional District?  
Enter ZIP code

United States Census Bureau  
U.S. Department of Commerce  
Economics and Statistics Administration  
U.S. CENSUS BUREAU  
census.gov

POWERED BY  
The American Community Survey and County Business Patterns

census.gov/mycd

**Congressional District 14 (116th Congress), New York**  
Source: 2018 American Community Survey 1-Year Estimates

Housing Occupancy	Estimate
Total housing units	267,609
Occupied housing units	244,262
Vacant housing units	23,347
Homeowner vacancy rate	1.6%
Rental vacancy rate	2.0%

Housing Tenure	Estimate
Occupied housing units	244,262
Owner-occupied	77,963
Renter-occupied	166,299
Average household size of owner-occupied unit	2.96
Average household size of renter-occupied unit	2.77

Year Householder Moved into Unit	Estimate
Occupied housing units	244,262
Moved in 2015 or later	32,013

Display ACS Margin of Error

# The American Community Survey

## My Tribal Area

### My Tribal Area

Enter name of Tribal Area

OR

- New York
- Shinnecock Reservation (state)

Shinnecock Reservation (state), NY  
Source: 2014-2018 American Community Survey 5-Year Estimates

**Sex and Age**

Category	Estimate	ACS Margin of Error
Total population	16	( +/-20)
Male	13	( +/-16)
Female	3	( +/-6)
Under 5 years	0	( +/-12)
5 to 9 years	0	( +/-12)
10 to 14 years	0	( +/-12)
15 to 19 years	0	( +/-12)
20 to 24 years	0	( +/-12)
25 to 34 years	4	( +/-7)
35 to 44 years	0	( +/-12)
45 to 54 years	0	( +/-12)
55 to 59 years	3	( +/-6)
60 to 64 years	5	( +/-8)
65 to 74 years	4	( +/-7)
75 to 84 years	0	( +/-12)
85 years and over	0	( +/-12)

U.S. Department of Commerce  
Economics and Statistics Administration  
U.S. CENSUS BUREAU  
census.gov

POWERED BY  
The American Community Survey

People Jobs Housing Economy Education

### Shinnecock Reservation (state), NY

Source: 2014-2018 American Community Survey 5-Year Estimates

Sex and Age	ACS Margin of Error
Total population	16 ( +/-20)
Male	13 ( +/-16)
Female	3 ( +/-6)
Under 5 years	0 ( +/-12)
5 to 9 years	0 ( +/-12)
10 to 14 years	0 ( +/-12)
15 to 19 years	0 ( +/-12)
20 to 24 years	0 ( +/-12)
25 to 34 years	4 ( +/-7)
35 to 44 years	0 ( +/-12)
45 to 54 years	0 ( +/-12)
55 to 59 years	3 ( +/-6)
60 to 64 years	5 ( +/-8)
65 to 74 years	4 ( +/-7)
75 to 84 years	0 ( +/-12)
85 years and over	0 ( +/-12)

Display ACS Margin of Error

Download and Share

# The American Community Survey On The Map for Emergency Management



Hurricanes, Floods,  
Winter Storms



Disaster Areas



Wildfires



Demographic &  
Economic Data

**OnTheMap for Emergency Management** LEHD Home OnTheMap Help and Documentation

Search:  Filter U.S. Census Bureau data for disasters, natural hazards, and weather events. Click for more information on Pacific Storms.

**Events as of 09/20/2019**

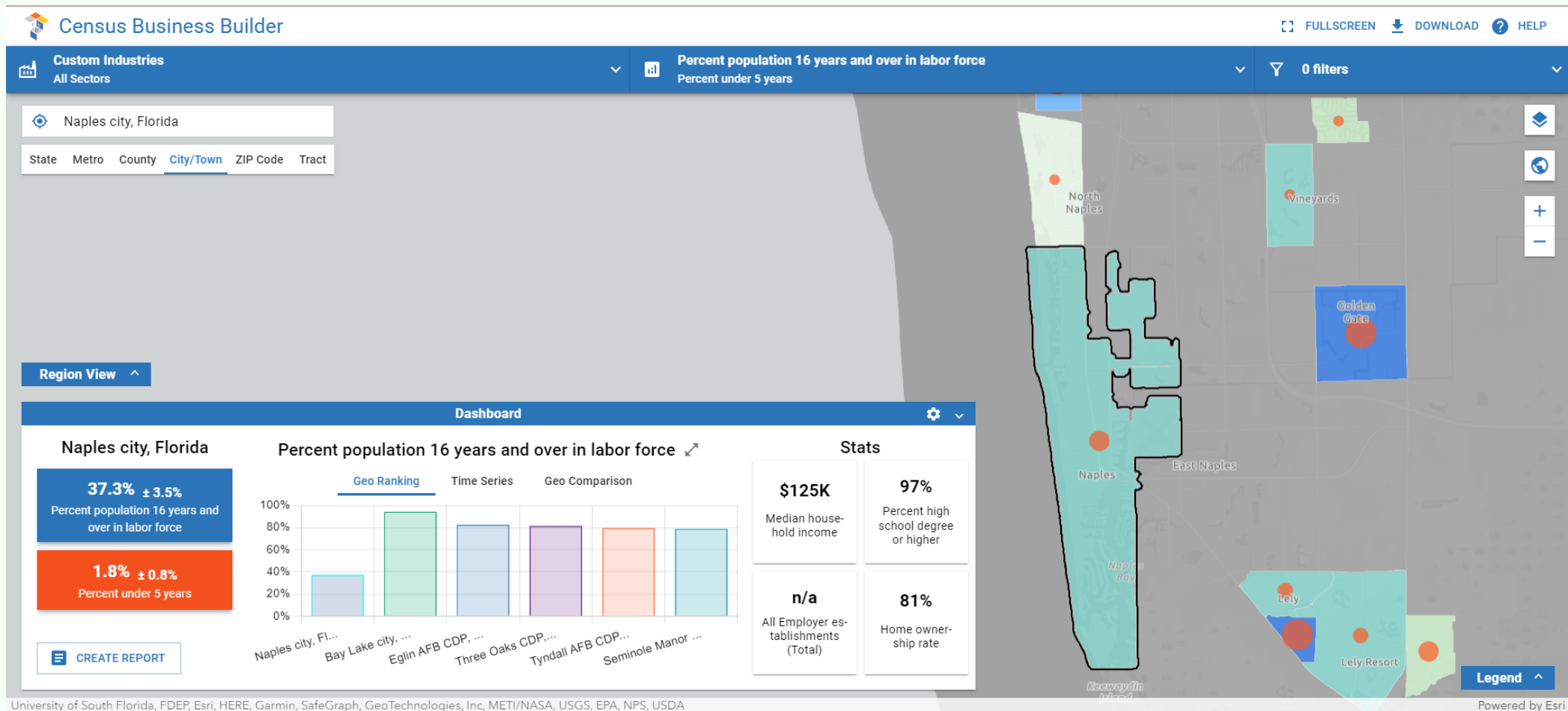
- Hurricanes**
  - Tropical Depression Imelda  
Texas, Oklahoma  
Affected Population: 11,259,042
- Post-tropical**
  - Florida, Georgia, South Carolina and 1 other States  
Affected Population: 0
- Hurricane Jerry**
  - Puerto Rico, United States Virgin Islands  
Affected Population: 0
- Tropical Storm Kiko**
  - No data  
Affected Population: 0
- Tropical Storm Mario**
  - No data  
Affected Population: 0
- Hurricane Lorena**
  - No data  
Affected Population: 0
- Wildfires**
  - Walker Fire  
Zip 95983  
Affected Population: 10
  - Sheridan Fire  
Zip 86305  
Affected Population: 9
  - Boone Fire  
Zip 87577, 87581  
Affected Population: 0
  - Middle Mamm Fire  
Zip 59917

Map data ©2019 Google, INEGI | Terms of Use

Privacy Policy | 2010 Census | Data Tools | Information Quality | Product Catalog | Contact Us | Home  
Source: U.S. Census Bureau, Center for Economic Studies, LEHD | e-mail: CES.OnTheMap.Feedback@census.gov

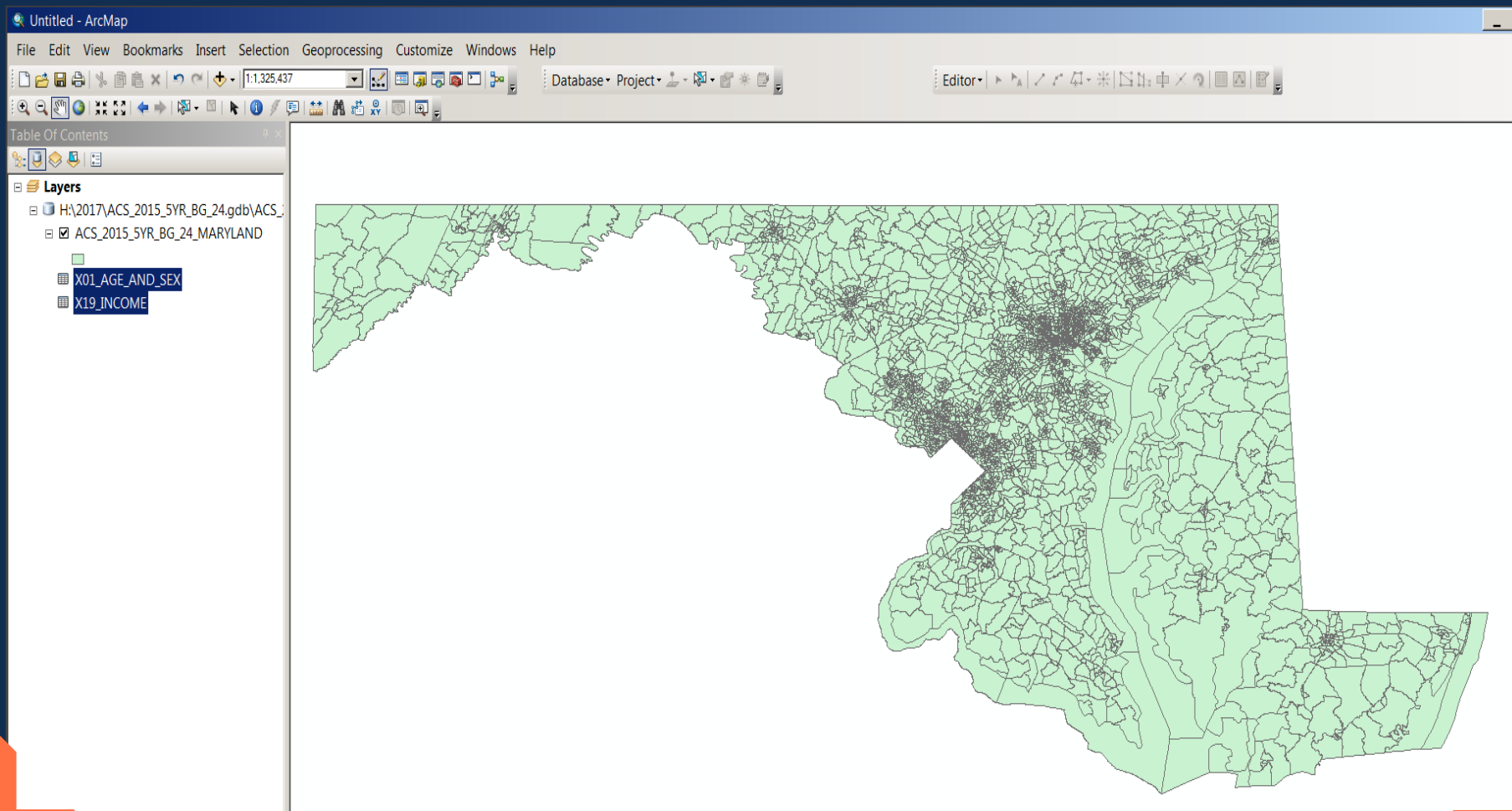
[onthemap.ces.census.gov/em/](https://onthemap.ces.census.gov/em/)

# The American Community Survey Census Business Builder

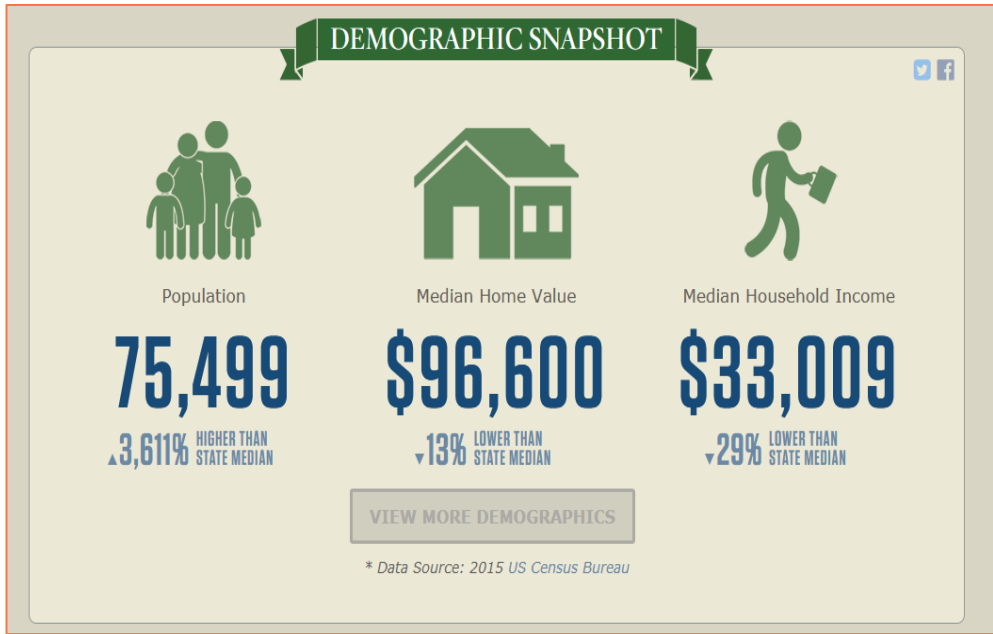




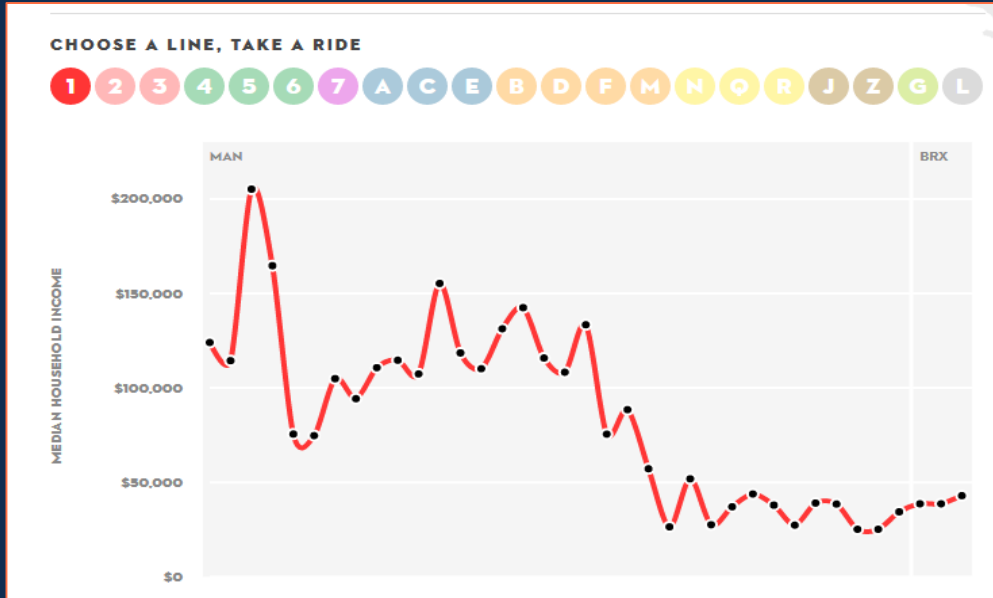
# The American Community Survey TIGER/Line Shapefiles w/ Selected Demographic Data







# The American Community Survey



# Application Programming Interface (API)

The American  
Community Survey  
Explore Census Data  
data.census.gov

An official website of the United States government [Here's how you know](#)

**United States<sup>®</sup>  
Census  
Bureau**

# Explore Census Data

Learn about America's People, Places, and Economy

Find Tables, Maps, and more ...

[Help](#) [Feedback](#) [Advanced Search](#)

Try searching for [grocery st](#) | in [Georgia](#) in [2017](#)

## find tables

Economic Census  
**EC1700BASIC** | All Sectors: Summary Statistics for the U.S., States, and Selected Geographies: 2017  
ECNBASIC2017

Notes Geos Years Topics Surveys Codes 123 Hide Filter Restore Excel CSV ZIP Print More Data Map

Geographic Area Name	Meaning of NAICS code	Number of firms	Pivot Mode
Allegany County, Maryland	Wholesale trade	43	<input type="checkbox"/> Search...

Explore the thousand  
new tables every we

[Explore Tables](#)

# The American Community Survey

## Data Product Type: Profiles

### Description

- Offer a broad look at a community's social, economic, housing, & demographic characteristics
- Generally include many different variables
- Geography or population group is at the center

### Types

- Data Profiles (DP)
- Comparison Profiles (CP)
- Selected Population Profiles (S0201)

[census.gov/programs-surveys/acs/guidance/which-data-tool/table-ids-explained.html](https://www.census.gov/programs-surveys/acs/guidance/which-data-tool/table-ids-explained.html)

# The American Community Survey

## Data Product Type: Tables

### Description

- A precise or detailed view of a subject
- Subject matter is at the center of the table

### Types

- Detailed Tables (B or C)
- Supplemental Table (K20)
- Subject Tables (S)
- Ranking Tables (R)
- Geographic Comparison Tables (GCT)

[census.gov/programs-surveys/acs/guidance/which-data-tool/table-ids-explained.html](https://www.census.gov/programs-surveys/acs/guidance/which-data-tool/table-ids-explained.html)

# The American Community Survey Table/Profile Numbering

B06004BPR

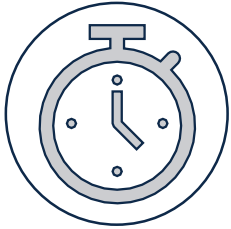
- B=Data Product Type (Base Table)
- 06=Subject (Place of Birth)
- 004=Sequential Number (2 or 3 digits)
- B=Race/Hispanic Origin (Black/African American)
- PR=For Puerto Rico Geographies Only



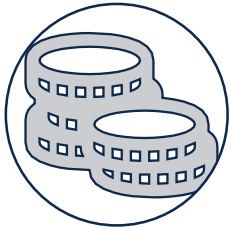


# The American Community Survey

## Finding Data Examples



Commuting times by place within a state



Income data for a congressional district



Median housing value for all counties in a state

# The American Community Survey

## Main Page

An official website of the United States government [Here's how you know](#)

**United States Census Bureau** Partners Researchers Educators Survey Respondents News NAICS Codes Jobs About Us Contact Us Help

Topics **Data & Maps** Surveys & Programs Resource Library

// [Census.gov](#) / [Our Surveys & Programs](#) / [American Community Survey \(ACS\)](#)

## American Community Survey (ACS)

The [American Community Survey \(ACS\)](#) helps local officials, community leaders, and businesses understand the changes taking place in their communities. It is the premier source for detailed population and housing information about our nation.

### Featured

#### Respond to the ACS

Learn the different ways to respond to the American Community Survey – online, by phone, by email. Read our FAQs or call us for more help with the survey.

#### American Community Survey Data

[census.gov/acs](#)

- Within Our Surveys & Programs
  - About the ACS
  - Respond to the ACS
  - News & Updates
  - Data
  - Microdata
  - Guidance for Data Users
  - Geography & ACS
  - Technical Documentation
  - Research & Methodology
  - Information For...
  - Library
  - Contact Us

# The American Community Survey

## Why We Ask

AMERICAN  
COMMUNITY  
SURVEY (ACS)

ACS and the 2020  
Census

Top Questions  
About the Survey

Why We Ask Each  
Question

ACS Information  
Guide

ACS Data Stories

Sample ACS and  
PRCS Forms &  
Instructions

About the Puerto  
Rico Community  
Survey



## About the American Community Survey

### What is the American Community Survey?

The American Community Survey (ACS) is an ongoing survey that provides vital information on a yearly basis about our nation and its people. Information from the survey generates data that help determine how more than \$675 billion in federal and state funds are distributed each year.



## American Community Survey

[← Back to Topics Page](#)

Why We Ask Questions About...

### Commuting / Journey to Work

We ask questions about where people work, how they get there, when they leave home, and how long it takes, to create statistics about commuting, or a person's journey to work.

Commuting patterns and characteristics are crucial to planning for improvements to road and highway infrastructure, developing transportation plans and services, and understanding where people are traveling in the course of a normal day.



### Your privacy concerns

"I Don't Want Everyone to Know What Time I Leave"

We use your confidential survey answers to create statistics like those in the results below and in the full tables that contain all the data—no one is able to figure out your survey answers from the statistics we produce. The Census Bureau is legally bound to strict confidentiality requirements. Individual records are not shared with anyone, including federal agencies and law enforcement entities. By law, the Census Bureau cannot share respondents' answers with anyone—not the IRS, not the FBI, not the CIA, and not with any other government agency.

### Questions as they appear on the form

We ask five questions about a person's journey to work to create a profile of a community's commuting patterns.

[View Questions](#)

[census.gov/acs/www/about/  
why-we-ask-each-question](https://census.gov/acs/www/about/why-we-ask-each-question)

# American Community Survey

About the Survey

Respond to the Survey

News & Updates

Data
<b>Data Tables &amp; Tools</b>
Data Profiles
Narrative Profiles
Subject Tables
Ranking Tables
Supplemental Tables
data.census.gov
More ACS Tools & Apps
Data via FTP
Summary File Data
PUMS Data
Variance Replicate Tables

## Data Tables & Tools

### Data Profiles Selector

Data Profiles consist of four tables (Social, Economic, Housing, Demographic) to give a broad statistical view of a particular geography. We provide an easy to use [Data Profiles geography selector](#) for the most popular geographies: state, county and place. Our full data website, [data.census.gov](http://data.census.gov), provides additional geographies for this table type and many more.

### Narrative Profiles

The only place to find the current Narrative Profiles is right here on American Community Survey website. Narrative Profiles contain much of the same information found in the Data Profiles, except it is a text-based report with plenty of colorful graphs and charts. Use the map selector or the dropdown boxes to [generate a Narrative Profile](#) for your favorite place.

### Subject Tables

More interested in a particular topic than a particular geography? Check out our listing of ACS Subject Tables. Subject Tables have both numbers and percentages making them the versatile choice for data seekers. You can search/filter the listing, and then link to [data.census.gov](http://data.census.gov) where you can change geographies and go back in time! [Choose your Subject Table here!](#)

### Data by Topic

- Age and Sex / Age
- Race and Ethnicity
- Ancestry
- Place of Birth
- Language
- Migration / Mobility
- Children
- Grandparents
- Households & Families
- Marital Status
- Fertility
- Disability
- Health Insurance
- Education

# The American Community Survey

## Data Tables & Tools

[census.gov/acs/www/data/  
data-tables-and-tools/](https://census.gov/acs/www/data/data-tables-and-tools/)

# The American Community Survey Comparison Guidance



[Partners](#) [Researchers](#) [Educators](#) [Survey Respondents](#)

[News](#) [NAICS Codes](#) [Jobs](#) [About Us](#) [Contact Us](#)

[Topics](#) [Data & Maps](#) [Surveys & Programs](#) [Resource Library](#)

Search data, events, resources, and more

// [Census.gov](#) / [Our Surveys & Programs](#) / [American Community Survey \(ACS\)](#) / [Guidance for Data Users](#) / [Comparing ACS Data](#)

Within Guidance for Data Users

[Comparing ACS Data](#)

[Handbooks](#)

[Recorded Webinars](#)

[Subjects Included in the Survey](#)

[Statistical Testing Tool](#)

[Using ACS Data with Open-Source Software](#)

[When to Use 1-year or 5-year Estimates](#)

[Which Data Table or Tool Should I Use?](#)

## Comparing ACS Data

Share



The strength of the American Community Survey (ACS) is in estimating characteristic distributions. If you are looking for population totals, we recommend the [2020 Census](#) or [Population Estimates Program](#).

It is also important to keep in mind that **all ACS data are estimates**. We collect data from a sample of the population in the United States and Puerto Rico rather than from the whole population. To help you interpret the reliability of the estimates, the Census Bureau publishes a margin of error (MOE) for every ACS estimate.

### Related Information

[Share Your ACS Data Story](#)

[Contact Us](#)

[census.gov/programs-surveys/acs/guidance/comparing-acs-data.html](https://census.gov/programs-surveys/acs/guidance/comparing-acs-data.html)



# The American Community Survey



## Comparison Guidance



Use ACS for population characteristics (i.e., percent, means, medians, rates)

Use ACS for population totals (instead use decennial census or the Population Estimates Program)



Compare non-overlapping datasets (i.e., 2008-2012 to 2013-2017)

Compare overlapping datasets (i.e., 2012-2016 to 2013-2017)



Compare similar period lengths (i.e., 1-year to 1-year)

Compare estimates from different period lengths (i.e., 1-year to 5-year)



Conduct statistical testing when making comparisons between estimates

Look at estimates alone to decide if they are higher or lower than one another



# The American Community Survey

## What is the Margin of Error (MOE)?

Definition: An MOE is a measure of the possible variation of the estimate around the population value

- At a given confidence level, the estimate & actual population value will differ by no more than the MOE
- 90% confidence level is the Census standard & ACS MOEs are provided in the same unit as the estimate

### Example: How many males under age 5 live in WY?

Lower bound =  $19,174 - 346 = 18,828$

Upper bound =  $19,174 + 346 = 19,520$

We are 90% confident the true number of males under age 5 in Wyoming falls **between 18,828 & 19,520**

Wyoming		
	Estimate	Margin of Error
Total :	583,200	*****
Male :	298,301	+/-673
Under 5 years	19,174	+/-346
5 to 9 years	20,796	+/-771
10 to 14 years	20,227	+/-740
15 to 17 years	11,677	+/-367
18 and 19 years	7,605	+/-364

# The American Community Survey Technical Documentation Page

The screenshot shows the top navigation bar of the American Community Survey website. The United States Census Bureau logo is on the left. Navigation links include Partners, Researchers, Educators, Survey Respondents, News, NAICS Codes, Jobs, and About Us. A secondary navigation bar contains Topics, Data & Maps, Surveys & Programs (which is underlined), and Resource Library. A search box is on the right. Below the navigation is a breadcrumb trail: // Census.gov / Our Surveys & Programs / American Community Survey (ACS) / Technical Documentation. The main heading is 'Technical Documentation'. To the left is a sidebar with links: Within American Community Survey (ACS), Code Lists, Definitions, and Accuracy, Data Suppression, Errata Notes, Table & Geography Changes, Table Shells and Table List, and User Notes. Below the heading are social media share icons for Facebook, Twitter, and LinkedIn. A paragraph of text follows: 'The American Community Survey provides various documentation to assist users with our data releases. Click on the links below to learn more about these resources.' To the right is a 'Related Information' section with links to 'American Commu...', 'Share Your ACS D...', and 'Contact Us'.

// Census.gov / Our Surveys & Programs / American Community Survey (ACS) / Technical Documentation

**Within American Community Survey (ACS)**

[Code Lists, Definitions, and Accuracy](#)

[Data Suppression](#)

[Errata Notes](#)

[Table & Geography Changes](#)

[Table Shells and Table List](#)

[User Notes](#)

## Technical Documentation

Share



The American Community Survey provides various documentation to assist users with our data releases. Click on the links below to learn more about these resources.

### Related Information

[American Commu...](#)

[Share Your ACS D...](#)

[Contact Us](#)

### Code Lists, Definitions, and Accuracy

View the detailed codes and definitions for variables, statistical testing, and an

[census.gov/programs-surveys/acs/technical-documentation.html](https://census.gov/programs-surveys/acs/technical-documentation.html)

# The American Community Survey Glossary

The screenshot shows the 'Glossary' page on Census.gov. At the top, there is a navigation bar with the United States Census Bureau logo and various menu items: TOPICS (Population, Economy), GEOGRAPHY (Maps, Products), LIBRARY (Infographics, Publications), DATA (Tools, Developers), SURVEYS/PROGRAMS (Respond, Survey Data), NEWSROOM (News, Blogs), and ABOUT US (Our Research). A secondary bar asks 'How do you like our Glossary?' with a 'Send Feedback' button. The main content area features a search bar, a 'Selected Terms' box with a 'Printable View' button, and a list of 111 terms. The first few terms are: Ability to speak English, Accessibility, Accommodation and Food Services, Accounts Receivable, Accuracy, Accuracy and Coverage Evaluation (A.C.E.), Acquisition, Acreage, Active members (of retirement systems), Actual Production, Adjustments, Administrative and Support and Waste Management and Remediation Services, Administrative costs (of retirement systems), Administrative data, and Administrative Entities. Each term has a checkbox and a 'View' link.

United States  
**Census**  
Bureau

U.S. Department of Commerce | Blogs | Index A-Z | Glossary | FAQs

TOPICS  
Population, Economy

GEOGRAPHY  
Maps, Products

LIBRARY  
Infographics, Publications

DATA  
Tools, Developers

SURVEYS/PROGRAMS  
Respond, Survey Data

NEWSROOM  
News, Blogs

ABOUT US  
Our Research

How do you like our Glossary? [Send Feedback](#)

Census.gov > Glossary

## Glossary

[Search](#) [<>](#)

# [A](#) [B](#) [C](#) [D](#) [E](#) [F](#) [G](#) [H](#) [I](#) [J](#) [K](#) [L](#) [M](#) [N](#) [O](#) [P](#) [Q](#) [R](#) [S](#) [T](#) [U](#) [V](#) [W](#) [X](#) [Y](#) [Z](#)

Select All 111 Terms Returned

- Ability to speak English [View](#)
- Accessibility [View](#)
- Accommodation and Food Services [View](#)
- Accounts Receivable [View](#)
- Accuracy [View](#)
- Accuracy and Coverage Evaluation (A.C.E.) [View](#)
- Acquisition [View](#)
- Acreage [View](#)
- Active members (of retirement systems) [View](#)
- Actual Production [View](#)
- Adjustments [View](#)
- Administrative and Support and Waste Management and Remediation Services [View](#)
- Administrative costs (of retirement systems) [View](#)
- Administrative data [View](#)
- Administrative Entities [View](#)

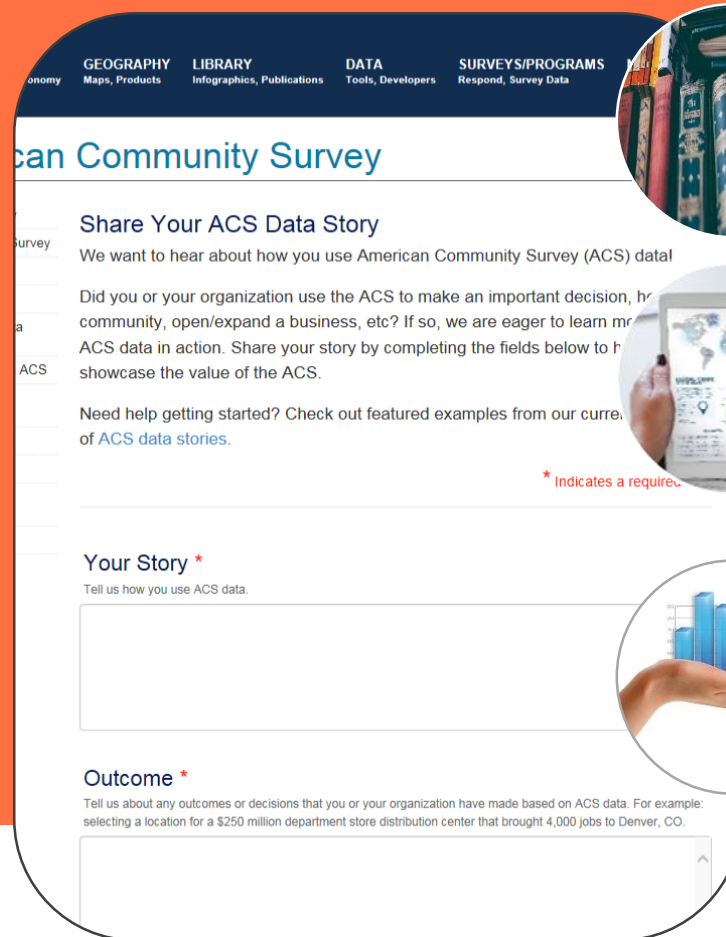
[Printable View](#)

[Clear All](#)

[census.gov/glossary](https://census.gov/glossary)

# The American Community Survey Data Tell Stories. Tell us Yours!

# The American Community Survey Data Tell Stories. Tell us Yours!



**Share Your ACS Data Story**

We want to hear about how you use American Community Survey (ACS) data to make an important decision, hire new employees, open an office, start a business, etc. Share your story by completing the fields below to help us showcase the value of the ACS.

Need help getting started? Check out featured examples from our current collection of [ACS data stories](#).

**Your Story \***

Tell us how you use ACS data.

**Outcome \***

Tell us about any outcomes or decisions that you or your organization have made based on ACS data. For example: selecting a location for a \$250 million department store distribution center that brought 4,000 jobs to Denver, CO.



**Your story**



**Your data details**



**Your outcome**

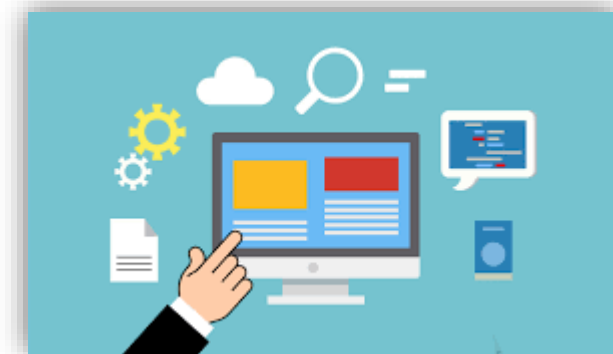
[census.gov/acs/www/share-your-story](https://census.gov/acs/www/share-your-story)





# AMERICAN COMMUNITY SURVEY DATA USERS GROUP

- Purpose:
  - Improve understanding of the value & utility of ACS data.
  - Promote information sharing among data users about key ACS data issues & applications.
- Includes users group website & online community
- ACS Data Users Conference
- Membership is free & open to all interested ACS data users



[acsdatacommunity.prb.org](https://acsdatacommunity.prb.org)

FREE Assistance Near You!  
Our regional data staff can help you access local statistics from the ACS or offer training to help build your skills.

The American  
Community Survey  
Need Local Stats?



Contact us at:  
844-ASK-DATA | (844-275-2382)  
[census.askdata@census.gov](mailto:census.askdata@census.gov)

# The American Community Survey Continue the Conversation

# The American Community Survey

## Continue the Conversation



**Sign up for & manage alerts at**  
<https://public.govdelivery.com/accounts/USCENSUS/subscriber/new>



**Social media:**  
[@uscensusbureau](#) [#ACSdata](#)



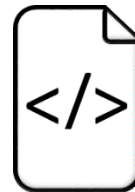
**More information online:**  
[census.gov/acs](https://www.census.gov/acs)



[Acso.users.support@census.gov](mailto:Acso.users.support@census.gov)  
[noelia.ana.moussignac@census.gov](mailto:noelia.ana.moussignac@census.gov)



**Census Customer Service Center**  
800.923.8282



**Source Us:**  
*U.S. Census Bureau's [YYYY – YYYY] American Community Survey  
[1/3/5]-year [estimates/statistics/data release]*

# The American Community Survey Questions



Thank You!

Noelia Ana Moussignac  
Data Dissemination & Training Specialist  
[noelia.ana.moussignac@census.gov](mailto:noelia.ana.moussignac@census.gov)