



NASS and the FDL



Rich Allen
Associate Administrator
October 21, 2002

NASS Mission



To provide timely, accurate,
and useful statistics in service
to U.S. agriculture.

What Does NASS Do?



- Administer USDA's Statistical Estimating Program and the 5-year Census of Agriculture
- Coordinate Federal/State Agricultural Statistical needs
- Statistical consulting for other Federal/State or private organizations and other countries
- Statistical Research

What Doesn't NASS Do?



- Set policy
- Regulate activities
- Permit influence
- Disclose individual reports
- Favor any group above others

What Doesn't NASS Do?



- International Statistics
- Daily, Weekly Market News
- Economic Interpretations
- Non-survey Projections



- “Agriculture’s *FACT* finders”
- Weekly, monthly, quarterly, and annual reports
- Census of agriculture (5 years) showcasing demographic and specialty agriculture data

Types of Reports



- **Weekly hatchery, crop conditions**
- **Monthly crop forecast, slaughter, cattle on feed inventories, etc.**
- **Quarterly grain stocks, acreage reports, hog inventories, etc.**
- **Annual crop production, livestock inventories, environmental estimates, farm production expenditures, etc.**

Who Uses the Data?



- **Farmers and ranchers rely on NASS reports to make production and marketing decisions**
- **Agribusinesses who provide farmers with seeds, equipment, chemicals, and other goods and services study NASS reports when planning their marketing strategies**

Who Uses the Data?



- **Food processors, transportation providers, storage facilities, banks, and other financial institutions rely on NASS data**
- **Analysts use NASS statistics to make projections of coming trends and their economic implications**
- **Librarians and other researchers**

Who Uses the Data?



- **U.S. and State legislatures to make well-informed long-range plans and emergency decisions that affect farmers/ranchers**
- **Farm and Ranch associations to promote agriculture and protect member interests**



Questions? Comments?
Suggestions? Send e-mail to
nass@nass.usda.gov
or phone the Ag. Statistics
Hotline at 800-727-9540 or
202-720-3878.

Read the:
[NASS Security Pledge](#)
[USDA Privacy Policy](#)

STATISTICAL INFORMATION

- [Publications](#)
- [Graphics](#)
- [Historical Data](#)
- [Search](#)
- [State Information](#)
- [Statistical Research](#)
- [Census of Agriculture](#)



Quick
STATS



[Ag Chem
Database](#)

AGENCY INFORMATION

- [News and Coming Events](#)
- [NASS Kids](#)
- [Agency Information](#)
- [Other Links](#)
- [Customer Service](#)

[Data Users' Forum](#)
[October 21, 2002](#)

2002
Census of
Agriculture

www.usda.gov/nass/



- Internet presence since 1995
- Reports are posted immediately after release
- Paper copies are available for almost all NASS reports

NASS Web Site



- Quick Stats
- Report Repository
- Current Information
- Special Links

NASS Web Site – Quick Stats



- U.S., State, county database
- Some data back to 1866
- Data format options

NASS Web Site – Ag Chem Database



- **Query database by crop, year, and active ingredient**
- **Data from 1990 - 2001**
- **Cooperative effort - NASS, Center for Integrated Pest Management, and USDA Regional Pest Management Centers**

NASS Web Site – ESS



- USDA's Economic and Statistics System
- Contract with the Mann Library
- Archive reports since 1995
- Free e-mail subscriptions

NASS Reports



- Over 400 National reports published annually
- Over 9,000 State-level reports annually
- Census reports for each State, Nation, and outlying areas

1997
Census of
Agriculture
AC97-A-51

United States
Summary and State Data
Volume 1, Geographic Area Series
Part 51

Issued March 1999

NASS
NATIONAL AGRICULTURAL STATISTICS SERVICE

Crop Production

Released August 10, 2001, by the National Agricultural Statistics Service (NASS), Agricultural Statistics Board, U.S. Department of Agriculture. For information on "Crop Production" call (202) 720-2123, office hours 7:30 a.m. to 4:00 p.m. ET.

**Corn Production Down 7 Percent from 2000
Soybean Production Up 4 Percent**

Corn production is forecast at 9.27 billion bushels, down 7 percent from last year and 2 percent from 1999. Based on conditions as of August 1, yields are expected to average 133.9 bushels per acre, down 3.2 bushels from last year. If realized, this would be the lowest production since 1997. Yields are mostly lower than 2000 in the central and eastern Corn Belt as well as the southern Plains. Mostly higher yields were reported in the western Corn Belt and Southeast where the corn crop is rebounding from drought conditions last year. Farmers expect to harvest 69.2 million acres of corn for grain, down 100,000 acres from June and 5 percent from 2000.

Soybean production is forecast at a record high 2.87 billion bushels, up 4 percent from 2000, and 8 percent from 1999. Based on August 1 conditions, yields are expected to average 38.7 bushels per acre, up 0.6 bushel from 2000. This is the third highest yield behind 38.9 bushels per acre in 1997 and 1998. Yields are mostly higher than last year in the Great Plains, Southeast, and lower Mississippi Valley. However, yields are down in the western Corn Belt and Atlantic Coast States. Area planted, at a record 75.2 million acres, is down slightly from June, but up 1 percent from last year. Acres for harvest, at a record 74.1 million acres, are up 2 percent from the 2000 acreage.

All Cotton production is forecast at 20.0 million 480-pound bales, up 16 percent from 2000. The yield is expected to average 670 pounds per harvested acre, up 38 pounds from last year. If realized, this would be the largest production on record. The record production is a combination of the second highest harvested acreage since 1962, coupled with above average yields throughout most of the cotton belt. Nationwide, producers expect to harvest 14.3 million acres, 10 percent above last year. Upland cotton accounts for 14.1 million harvested acres, 9 percent above 2000. American-Pima harvested acreage totaled 234,000 acres, 38 percent more than 2000. Upland cotton production is forecast at 19.4 million 480-pound bales, a 16 percent increase from 2000. Pima cotton production is forecast at 593 thousand 480-pound bales.

All wheat production is placed at 1.98 billion bushels, up 1 percent from the July forecast but down 11 percent from 2000. Based on August 1 conditions, the U.S. yield is forecast at 40.2 bushels per acre, up 0.2 bushels from last month.

U.S. Department of Agriculture
Dan Glickman, Secretary
Miguel Gonzalez, Under Secretary for
Research, Education, and Economics
NATIONAL AGRICULTURAL STATISTICS SERVICE
Donald M. Ray, Administrator

Agricultural Statistics Board Calendar



July 2002

Monday	Tuesday	Wednesday	Thursday	Friday
1 Crop Progress	2 Weather - Crop Summary	3 Broiler Hatchery Dairy Products Egg Products	4 HOLIDAY	5 Dairy Products Prices Milkfat Prices Poultry Slaughter
8 Noncitrus Fruits and Nuts - Ann. Crop Progress	9 Weather - Crop Summary	10 Broiler Hatchery Vegetables	11 Crop Production	12 Dairy Products Prices Agricultural Cash Rents Turkey Hatchery
15 Mink Crop Progress	16 Weather - Crop Summary	17 Agricultural Chemical Usage - Fruits Broiler Hatchery Milk Production	18 Farm Production Expenditures	19 Dairy Products Prices Milkfat Prices Cattle Cattle on Feed Cork Storage Livestock Slaughter Sheep
22 Catfish Processing Crop Progress	23 Weather - Crop Summary Chickens and Eggs	24 Agricultural Prices - Ann. Broiler Hatchery	25	26 Dairy Products Prices Monthly Hogs and Pigs
29 Catfish Production Crop Progress	30 Weather - Crop Summary Peanut Stocks and Processing	31 Agricultural Prices Broiler Hatchery		

July

What is the Census of Agriculture?



- **Accounting of U.S. agricultural producers and production**
- **Only source of uniform, comprehensive agricultural data for every county in the Nation**
- **Taken every five years in years ending with 2 and 7**

Why the Census of Agriculture?



- **Best interest of nation's agricultural producers**
- **Policy decisions *targeted locally***
- **Commercial decisions *targeted locally***
- **State university research analysis *targeted locally***
- **Producers interest begins *locally***

Scope and Content



- Land use and ownership
- Operator characteristics
- Crop production and acreage
- Machinery and equipment
- Livestock and poultry
- Fertilizer and chemical use
- Farm labor

Scope and Content



- Value of sales
- Other farm-related income
- Production expenditures
- Market value of land and buildings
- Irrigated land
- Type of organization
- Corporate structure

Farm Definition

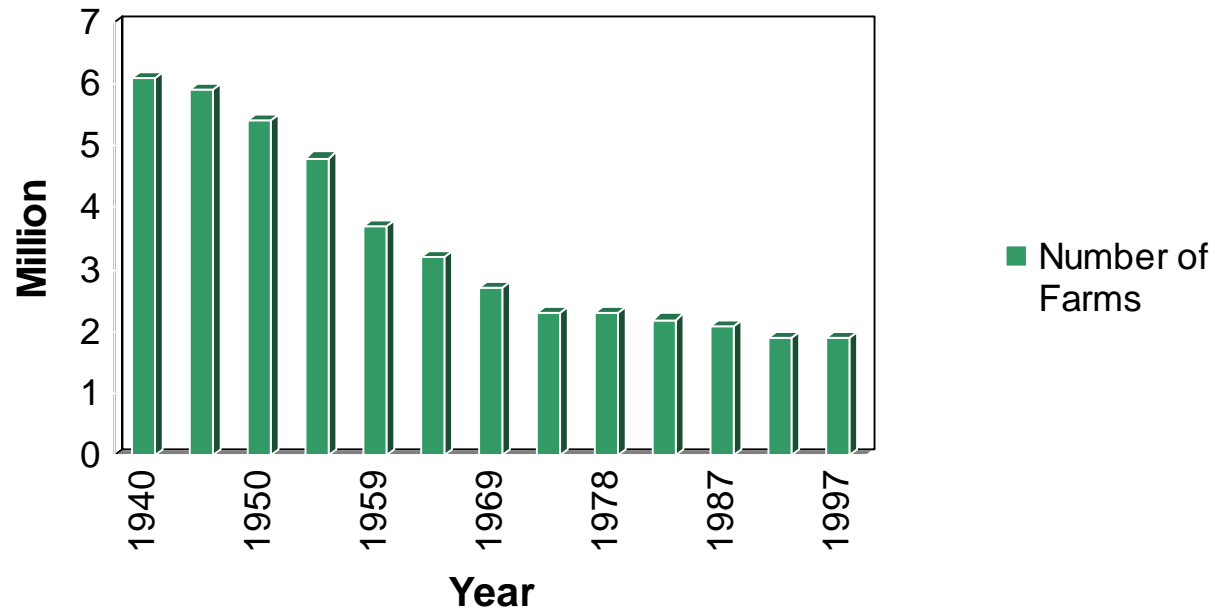


A farm is any place from which \$1,000 or more of agricultural products were produced and sold, or normally would have been sold, during the census year.

Trends Over Time



Census Count of Farms: 1940 to 1997



Changes for 2002 Census



- **Scannable questionnaire**
- **Measure computer and internet access**
- **Organic sales**
- **Production contracts/landlord shares**
- **Multiple operators**

Changes for 2002 Census



- Aquatic plants
- Acres treated with animal manure
- Grain storage capacity
- New commodities

Release Dates for the 2002 Census



- **Vol.1 Geographic Area Series – Feb. '04**
 - **U.S.**
 - **State and County**
 - **Puerto Rico**
 - **Guam, U.S. Virgin Islands, Northern Mariana Islands – Summer '03**
 - **American Samoa – Summer '04**

1997 Census of Agriculture County Profile

United States Department of Agriculture
Florida Agricultural Statistics Service



PALM BEACH FLORIDA

Land in farms

Decreased 5 percent from 637,934 acres in 1992 to 604,703 acres in 1997.

Average size of farms

Increased 2 percent from 690 acres in 1992 to 707 acres in 1997.

Full time farms

Decreased 12 percent from 555 farms in 1992 to 487 farms in 1997.

Market value of agricultural products sold

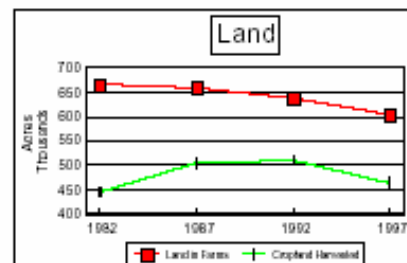
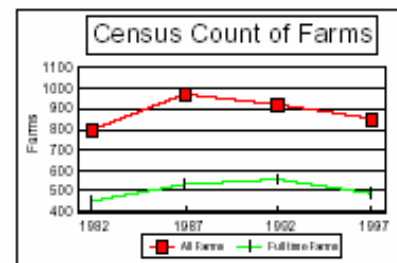
Decreased 2 percent to \$872,877,000 in 1997.

Crop sales accounted for 100 percent of the market value.

Livestock sales accounted for 0 percent of the market value.

Market value of agricultural products sold, average per farm

Increased 6 percent from \$964,497 in 1992 to \$1,020,908 in 1997.



Release Dates for the 2002 Census



- **Specialty Products**
 - **State and County Highlights - Spring '04**
 - **County Profiles – Spring '04**
 - **Native American – Fall '04**
 - **Top Commodities – Fall '04**

Release Dates for the 2002 Census



- **Vol. 2 Subject Series**
 - **Agricultural Atlas – Summer '04**
 - **Congressional District Ranking – Dec. '04**
 - **Zip Code Tabulations – Dec. '04**

Release Dates for the 2002 Census



- **Vol. 3 Special Studies**
 - **Farm and Ranch Irrigation Survey**
 - Dec. '04
 - **Census of Horticultural Specialties**
 - Dec. '05
 - **Census of Aquaculture – Dec. '06**

Cropland Data Layer

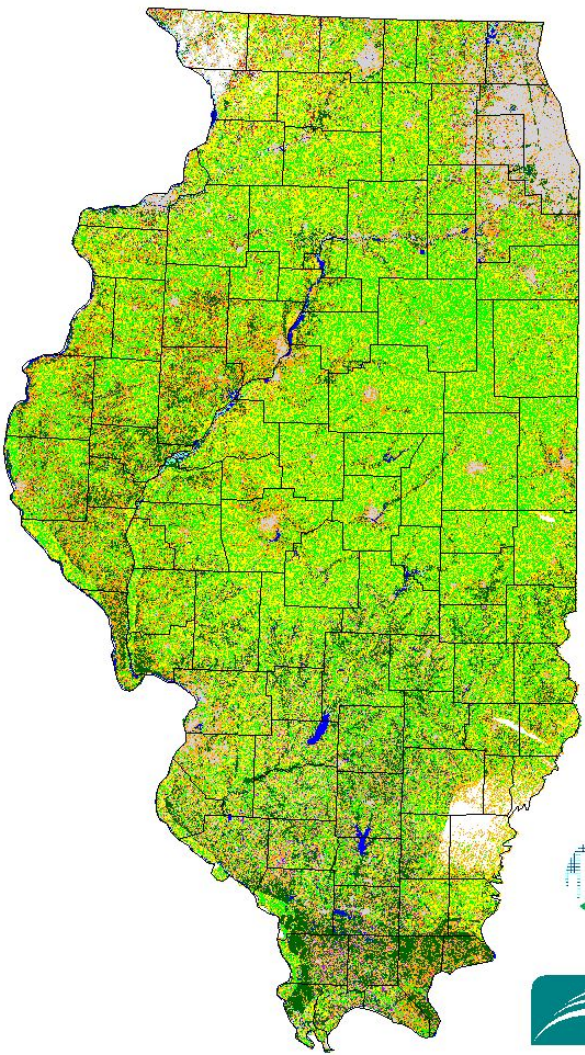


- Landsat based land use classification
- Available only for selected States
- CD-ROM product in GIS formats

Remote Sensing - Landsat



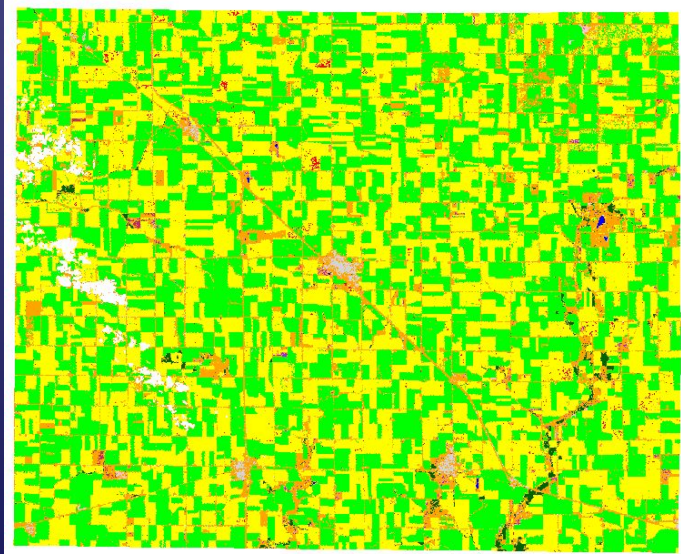
2000 Illinois Categorized Image



- Categories**
- Yellow: Corn
 - Light Green: Soybeans
 - Red: Other Crops
 - Purple: Winter Wheat
 - Dark Green: Other Small Grains
 - Brown: Idle Cropland
 - Orange: Pasture/Non Ag/CRP
 - Dark Green: Woods
 - Blue: Water
 - Grey: Urban
 - White: Clouds



2000 Benton County Indiana Categorized Image



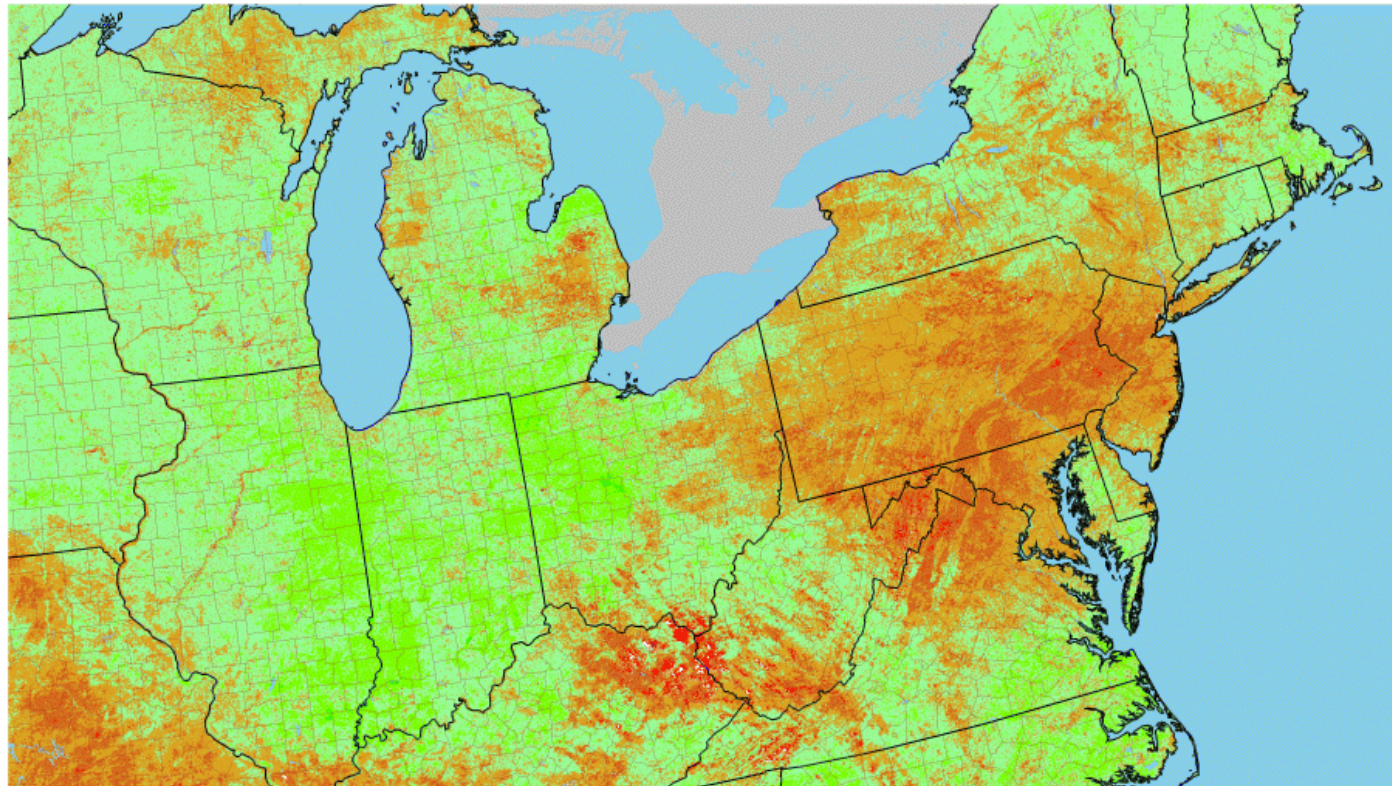
- Categories**
- Yellow: Corn
 - Light Green: Soybeans
 - Purple: Winter Wheat
 - Dark Green: Other Small Grains & Hay
 - Red: Double Cropped WW/Soybean
 - Orange: All Other Crops
 - Brown: Fallow/Idle Cropland
 - Dark Green: Pasture/Grassland/NonAg
 - Dark Green: Woods
 - White: Clouds
 - Blue: Water
 - Grey: Urban/Buildings/Homes
 - Cyan: Wetlands



Remote Sensing - AVHRR



Vegetation Condition Percent Change: 1999 ÷ Median (1995→1998)
Period 30 (7/16 - 7/29) 1999



Percentage



Compiled by: USDA/NASS & USDA/ARS, NOAA AVHRR 14, 1 KM Resolution
Composite Imagery: USGS EROS Data Center, Image at <http://www.nasa.usda.gov/research>



THANK YOU
for Your Support!

www.usda.gov/nass