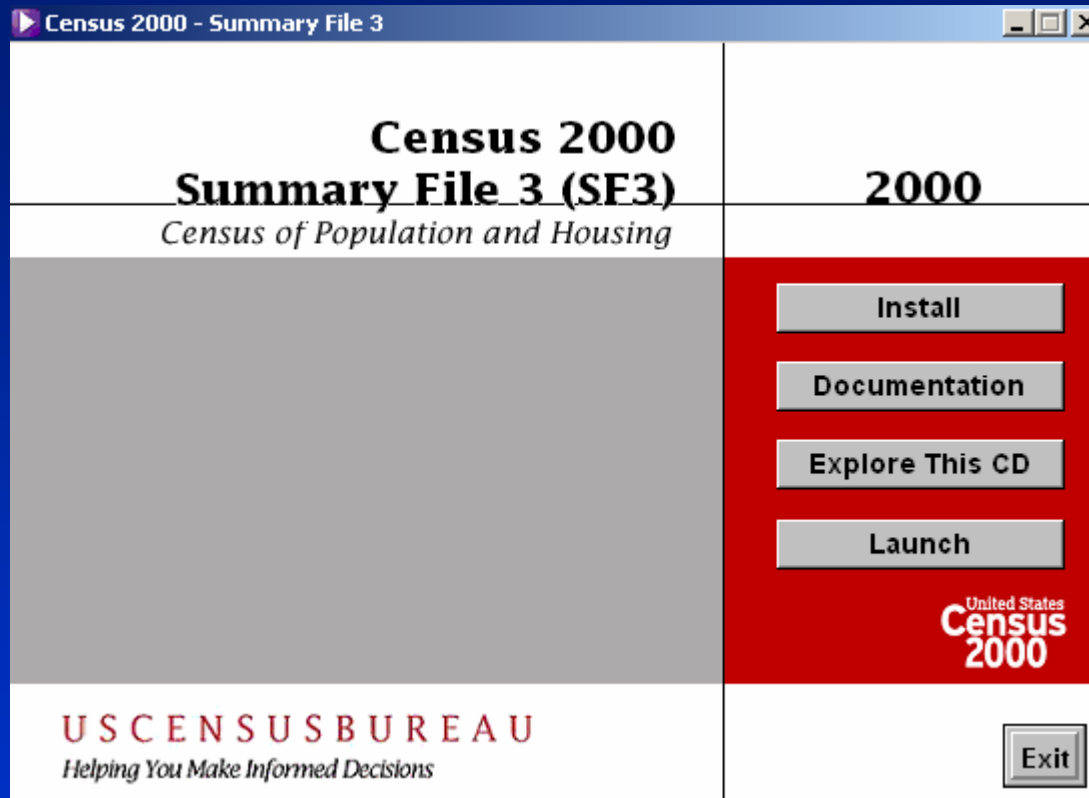


# Census 2000 Data Engine



Used for the Census 2000 DVDs and CD-ROMs

Andrea Sevetson

Marketing Services Office, U.S. Census Bureau

301-763-5207

# Assistance!

---

User assistance is available:

## SF1 Tutorial:

<http://www.census.gov/mso/www/sf1dvd/index.htm>

## PowerPoint Walk-through

[http://www.census.gov/mso/www/pres\\_lib/dataengine\\_files/v3\\_document.htm](http://www.census.gov/mso/www/pres_lib/dataengine_files/v3_document.htm)

# Assistance –2

## SF3 Slideshow

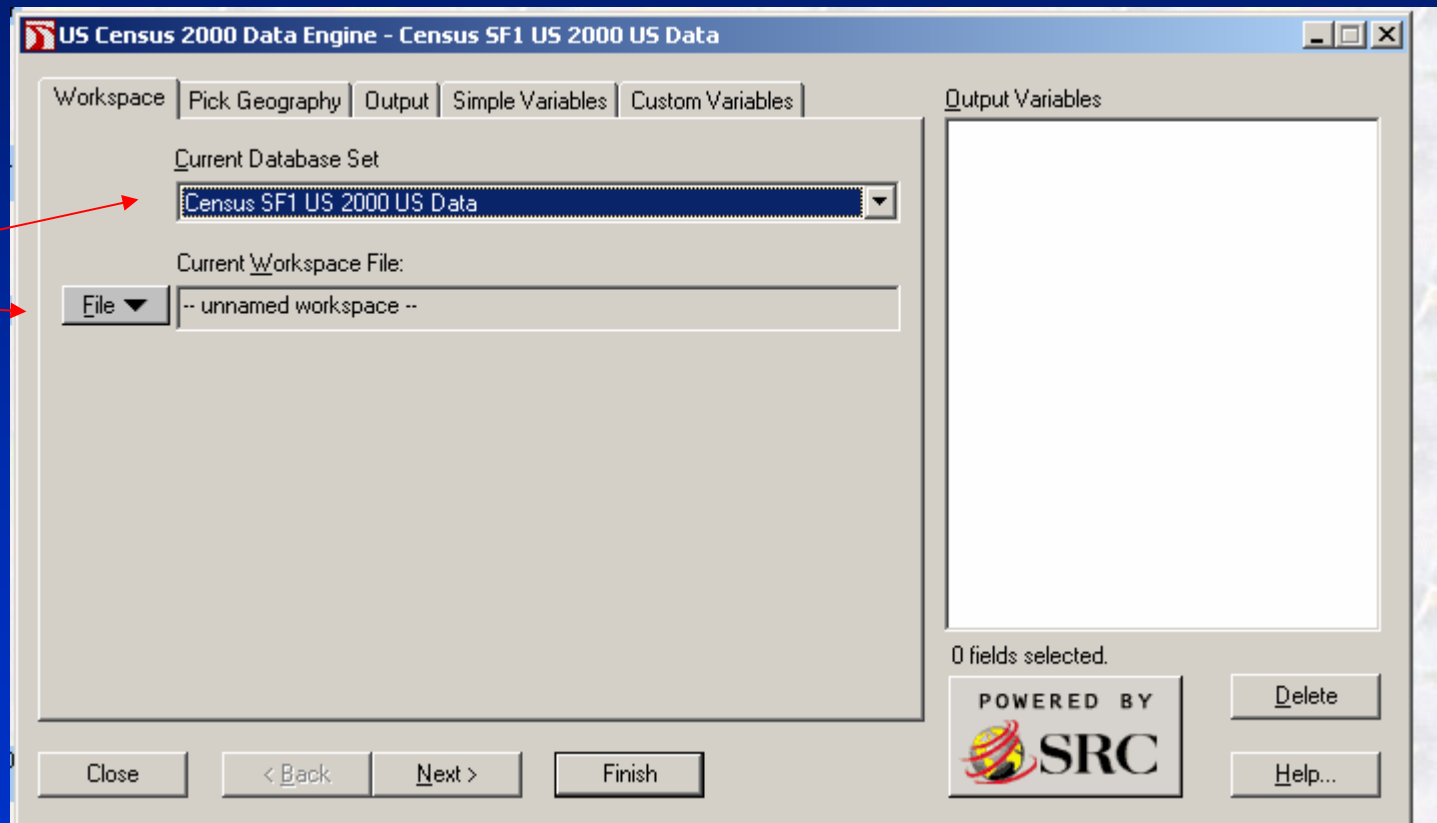
- [http://www.census.gov/mso/www/pres\\_lib/sf3\\_files/v3\\_document.htm](http://www.census.gov/mso/www/pres_lib/sf3_files/v3_document.htm)

## Technical Documentation:

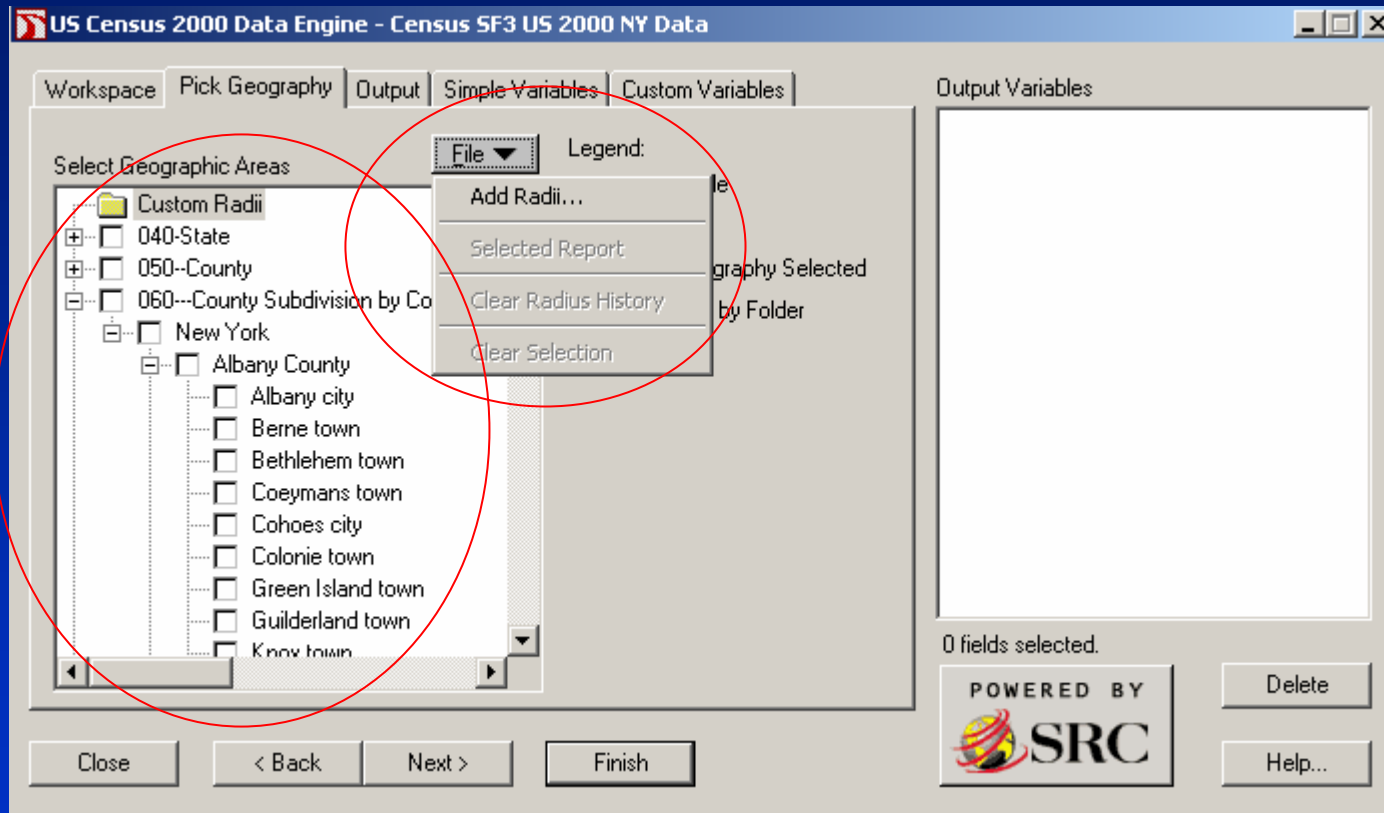
<http://www.census.gov/prod/cen2000/doc/sf1.pdf>

SF3.pdf on the CD-ROM/DVD

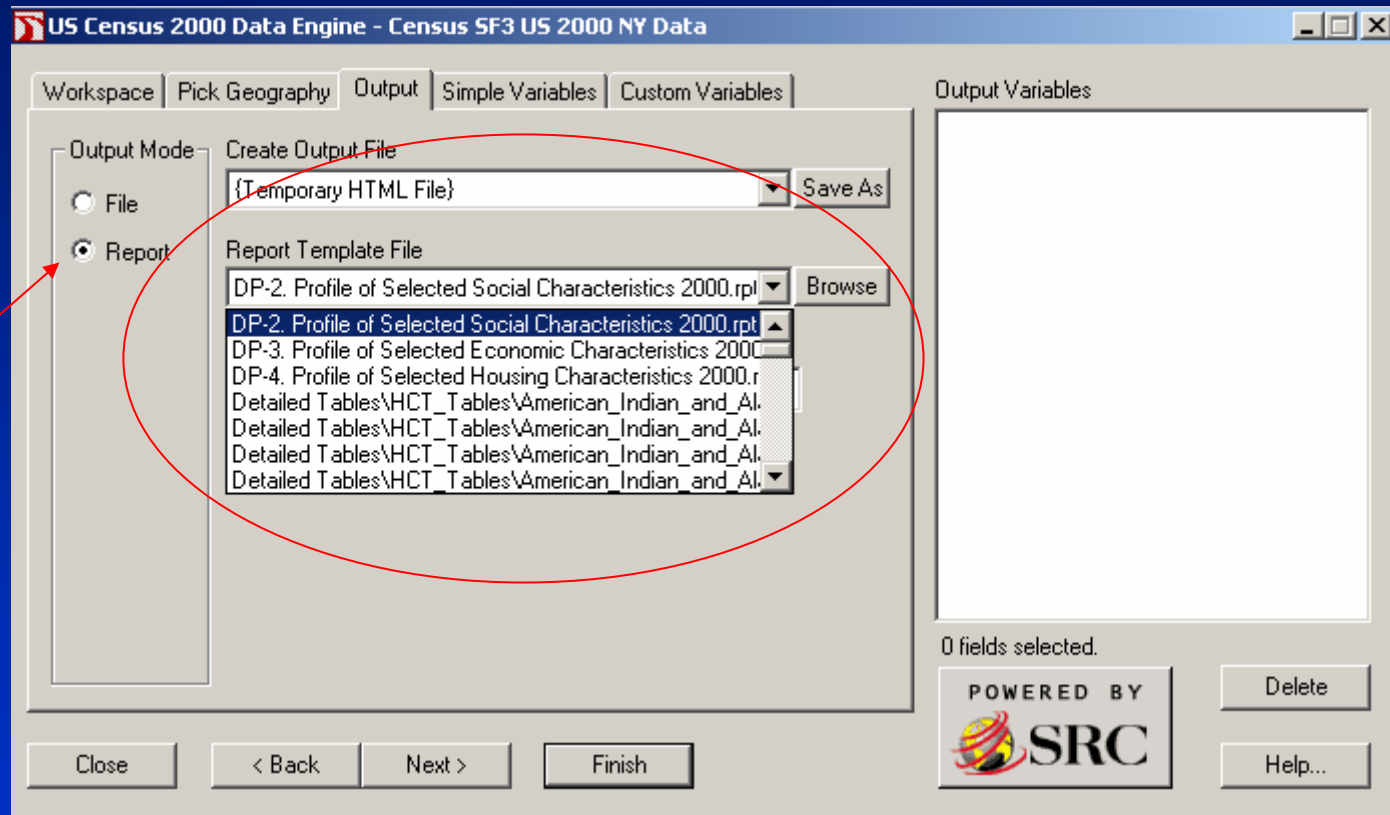
# Workspace Tab



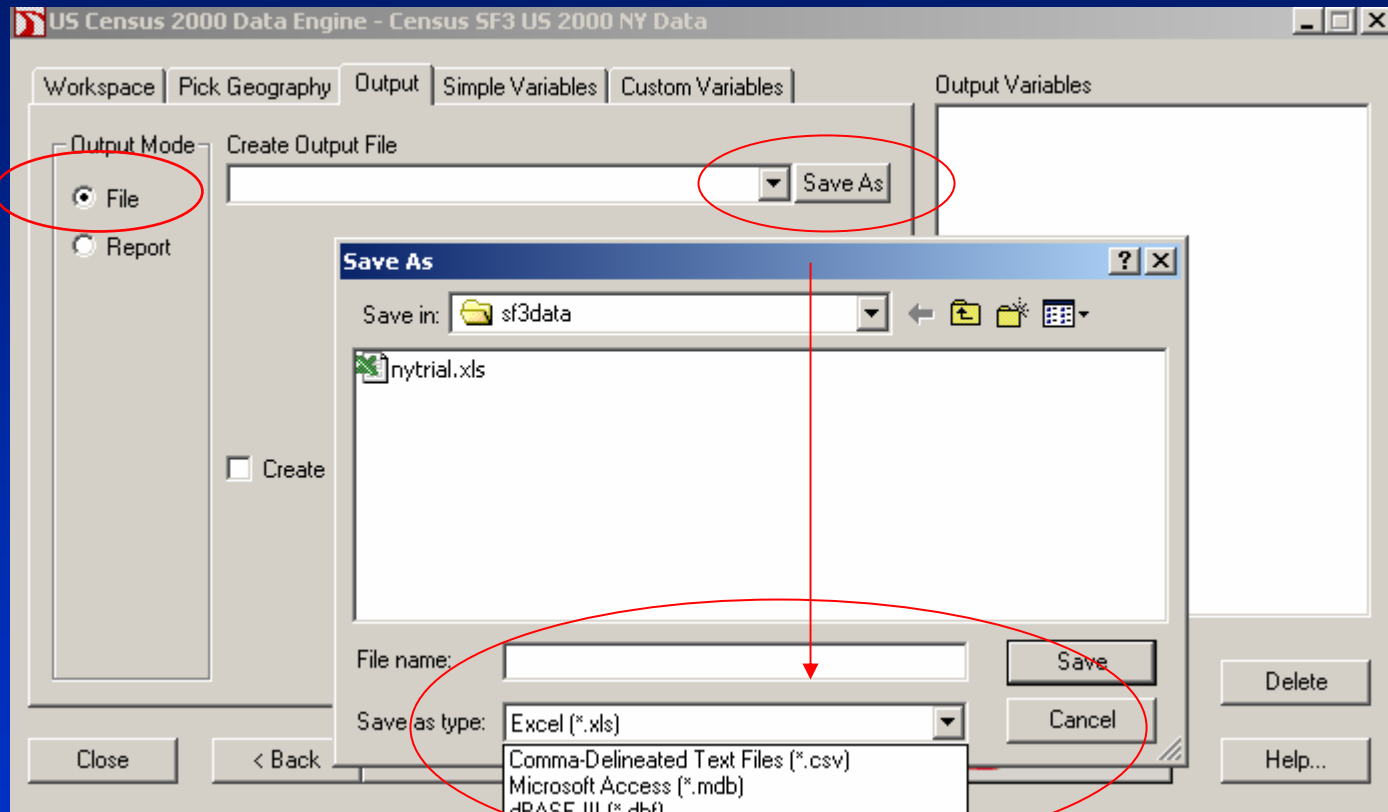
# Pick Geography Tab



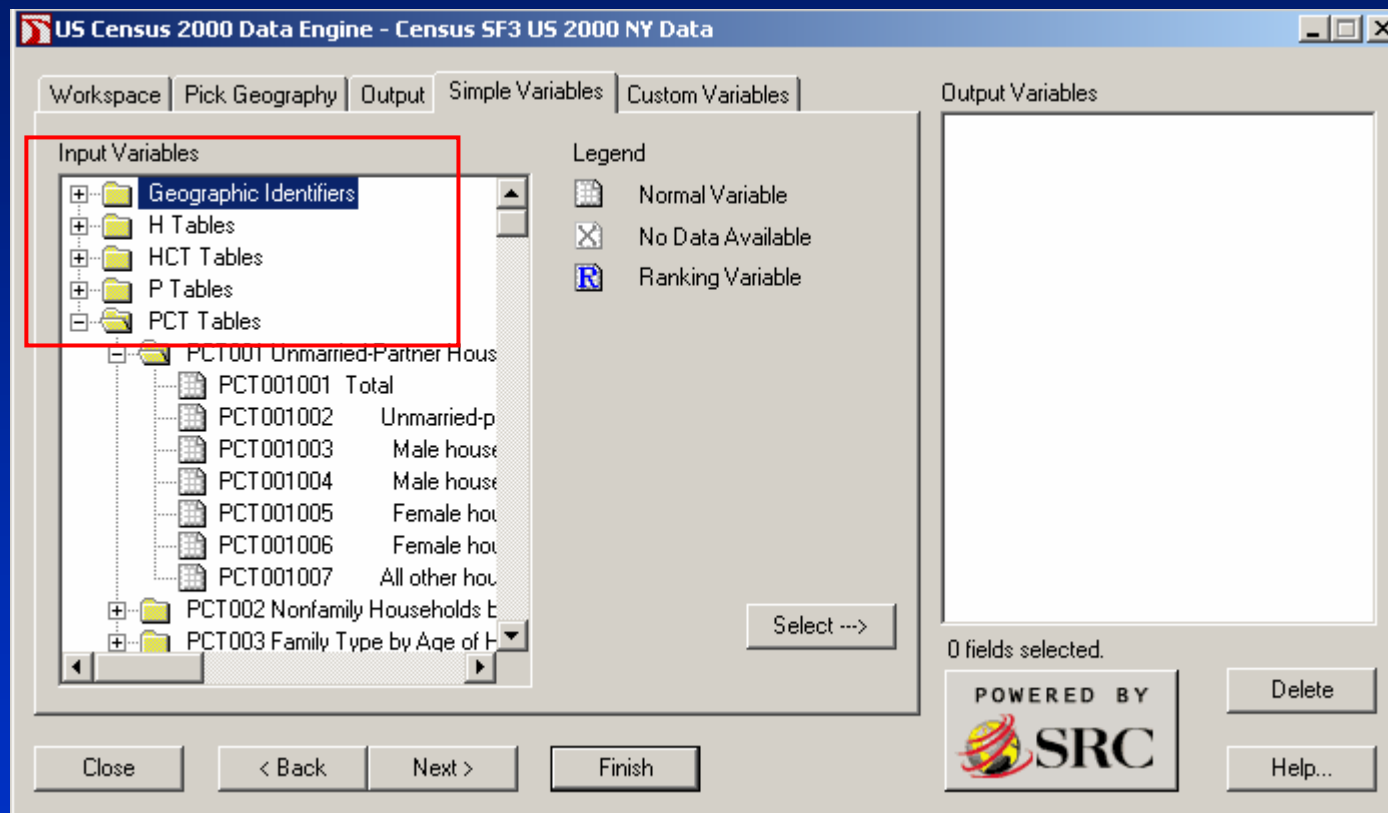
# Output Tab – Report



# Output Tab – *File*



# Simple Variables Tab





# Simple Variables Tab

US Census 2000 Data Engine - Census SF3 US 2000 NY Data

Workspace | Pick Geography | Output | **Simple Variables** | Custom Variables

**Input Variables**

- Geographic Identifiers
- H Tables
- HCT Tables
- P Tables
- PCT Tables
  - PCT001 Unmarried-Partner Households by Sex of Partners**
    - PCT001001 Total
    - PCT001002 Unmarried-p
    - PCT001003 Male hous
    - PCT001004 Male hous
    - PCT001005 Female hou
    - PCT001006 Female hou
    - PCT001007 All other hou
  - PCT002 Nonfamily Households b
  - PCT003 Family Type by Age of H

**Legend**

- Normal Variable
- No Data Available
- Ranking Variable

**Output Variables**

- PCT Tables
  - PCT001 Unmarried-Partner Hou:
    - PCT001001 Total
    - PCT001002 Unmarried-p
    - PCT001003 Male hous
    - PCT001004 Male hous
    - PCT001005 Female ho
    - PCT001006 Female ho
    - PCT001007 All other ho

7 fields selected.

POWERED BY SRC

Delete

Help...

Close < Back Next > Finish

# Custom Variables Tab

US Census 2000 Data Engine - Census SF3 US 2000 NY Data

Workspace | Pick Geography | Output | Simple Variables | Custom Variables

Input Variables

P031 Travel Time to Work for Worked persons

- P031001 Total
- P031002 Did not work at home
- P031003 Less than 5 minutes
- P031004 5 to 9 minutes
- P031005 10 to 14 minutes
- P031006 15 to 19 minutes
- P031007 20 to 24 minutes
- P031008 25 to 29 minutes
- P031009 30 to 34 minutes
- P031010 35 to 39 minutes
- P031011 40 to 44 minutes
- P031012 45 to 59 minutes
- P031013 60 to 89 minutes
- P031014 90 or more minutes

Pick fields from the list on the left and press "Var" and pick operators below to create a custom demographic.

Var + - \* / ( )

Formula  
[P031009]+[P031010]+[P031011]

New Variable Name  
30\_44

Clear Formula Select -->

Output Variables

- Custom...
  - 30\_44

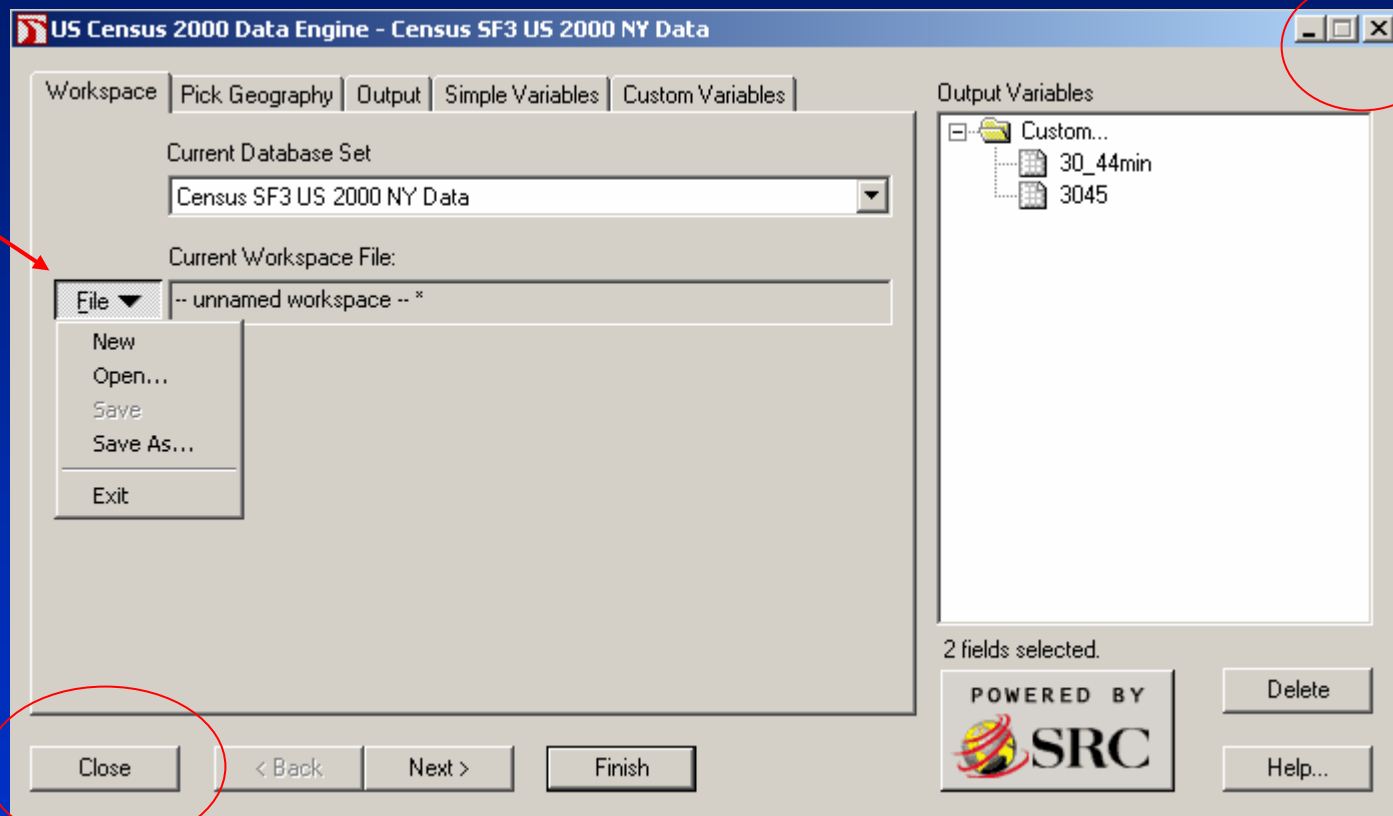
1 field selected.

POWERED BY SRC

Delete Help...

Close < Back Next > Finish

# Saving your Workspace



# Census Bureau Update

10/21/2002

Andrea Sevetson  
U.S. Census Bureau

## **Decennial Census News:**

<http://www.census.gov/main/www/cen2000.html> on the Census 2000 Gateway page.

Check the release schedule periodically as it gets updated on a regular basis  
<<http://www.census.gov/population/www/censusdata/c2kproducts.html>>. Last update is 9/25/02.

## **New products from Geography:**

- *American Indians and Alaska Natives in the United States.*

Two-sided wall map showing the location of American Indian lands in the United States one side and the location of Alaska Native lands in Alaska on the other. Also contains several insets providing graphical displays of the American Indian and Alaska Native Population: 1950-2000, Percent Distribution of the American Indian and Alaska Native Population by Region: 2000 and more (not yet sent to depositories, if you need a copy immediately, contact your Regional Office).

- *Census 2000 Census Tract Outline Maps on DVD\_ [0154-B-01, C 3.275:M 32/DVD, Shipping list dated 10/4/2002]* The Census Bureau is working on a Census 1990 Census Tract Outline Maps DVD, as well. **Census 2000 Briefs** The following briefs, based on the sample data, will be issued: Ancestry, Disability Status, Educational Attainment, English Ability, Employment Status, The Foreign-Born Population, Grandparents Living with Grandchildren, Household Income, Journey-to-Work, Language Use and Marital Status, Occupations, Poverty, Residential Mobility, School Enrollment, Veterans, Home Values, Housing Costs of Homeowners, Housing Costs of Renters, Structural and Occupancy Characteristics.

## **Forthcoming Special Reports:** (Fall 2002)

- Demographic Trends in the 20th Century
  - Racial and Ethnic Residential Segregation in the United States: 1980-2000
- Census 2000 Basics** - back at the Census Bureau (received today) , to be shipped to depository libraries.

## **Data Releases:**

**SF3** - All states are out on AFF, and on CD-ROM at Data Centers. We project the DVD will come out January 2003 – this is a *tentative* date.

**SF4** -Due to come out in April 2003. SF4 is repeated, or iterated, for the total population and 335 additional population groups: 132 race groups, 78 American Indian and Alaska Native tribe categories, 39 Hispanic or Latino groups, and 86 ancestry groups.

SF4 Threshold information: Tables for any population group excluded from SF 2 because the group's total population in a specific geographic area did not meet the SF 2 threshold of 100 people are excluded from SF 4.

In addition, all tables are shown for any of the above population groups only if there are at least 50 unweighted sample cases in a specific geographic area. For the ancestry iterations, only the 50 unweighted sample cases test can be performed.

The URL <http://www.census.gov/population/www/cen2000/SF4-race.html> gives the list of Race Groups, American Indian and Alaska Native tribes, Hispanic or Latino, and Ancestry Groups to be used in SF4.

### **Printed Reports:**

*PHC-1 Summary Population and Housing Characteristics* - presents counts and basic cross-tabulations of information collected from people and housing units. SF1 provides population counts for 63 race categories and Hispanic or Latino, and population counts for many detailed race and Hispanic or Latino categories, and American Indian and Alaska Native tribes.

Depositories have received 15-20 of these already. These are also available in PDF at the Census Bureau web <<http://www.census.gov/census2000/pubs/phc-1.html>>. As of October 18, 32 states were available online in PDF.

*PHC-2 Summary Social Economic and Housing Characteristics* – Reports for each state include information from the sample population and housing subjects. To be released in 2003.

*PHC-3 Population and Housing Unit Counts*- This report contains population and housing unit totals for Census 2000, as well as the 1990 and 1980 censuses. Information on area measurements and apportionment counts will be included. This report will be issued for each state, the District of Columbia, Puerto Rico, and a national summary volume. To be released in 2003.

*PHC-4 Island Areas* (Guam, the Commonwealth of the Northern Mariana Islands, and the Virgin Islands of the United States)

*PHC-5 Characteristics of American Indians and Alaska Natives*

### **Other Census Topics**

#### **2002 Economic Census**

<http://www.census.gov/eprd/www/econ97.html>

Questionnaires go out to 5 million businesses in December 2002 asking for information about business activity during calendar year 2002. The first product is anticipated in 2004.

#### **Census Bureau Training –**

- **Understanding Federal Statistics (4-day Seminar)**
- **Understanding Census Statistics (2-day Seminar)**

<http://www.census.gov/mso/www/training/index.htm>

This site also has links to the presentation library with PowerPoint slide presentations for public use, and links to the SF1 tutorial.

### **New Standards - Metropolitan & Micropolitan Statistical Areas**

54 FR 82228 (Dec 27, 2000)

<http://www.census.gov/population/www/estimates/metroarea.html>

Starting with 2003, new OMB standards take effect. The Census Bureau (and other statistical agencies) is moving to Metropolitan and Micropolitan Statistical Areas.

The *Federal Register* notice tells you the process they used, gives a synopsis of the comments received, and, on the last two pages, defines new terms.

New terms include: CBSAs (Core Based Statistical Areas), Employment Interchange Measure, Outside Core Based Statistical Areas, and more.

### **Certification Services**

<http://www.census.gov/mso/www/certification/>

Certification is the designation by which Census Bureau officials attest to the fact that they have reviewed a particular copy of a particular table, map, special tabulation, etc., and certify that it is a true and accurate copy of census information. The web page has information about different kinds of certification, length of time for certification, and more.

Andrea Sevetson

[Andrea.Sevetson@census.gov](mailto:Andrea.Sevetson@census.gov)

301-763-5207

## **Sample Exercises:**

- Find the population in all of the census tracts for the following counties: Albany, New York, Westchester. Find the population for one of the block groups listed below.
- Investigate the different summary levels (080, 140, 158, 511) to retrieve census tract data for one of the counties listed on this page. Note how the different summary levels affects the display for your chosen geographies.
- Using the cities listed below, find out whether the cities (Rome, Delhi, Elba, and Corfu) have more people with the represented ancestries/races (Italian, Asian Indian, German, Greek). Why doesn't this work for Delhi?
- Using the longitude and latitude for one of the locations below, find the population aged 18-29 within a 7-mile radius.

### **New York Geographies**

New York State Library, Cultural Education Center, Empire State Plaza, Albany, NY  
12223

County: Albany

Census Tract: 11

Block #1060 (BG #1)

Latitude: 42.652379

Longitude: -73.750173

World Trade Center, NY 10047

County: NY

Census Tract: 13

Block # 4000 (BG #4)

Latitude: 40.712086

Longitude: -74.012275

Ossining NY (home of Sing Sing Prison)

County: Westchester

Census Tract: 133.03

Block # 9000 (BG #9)

Latitude: 41.141046

Longitude: -73.867671

**Cities:** Rome (Oneida County); Delhi (Delaware County); Elba (Genessee County); Corfu (Genessee County)